


**OPEL ZAFIRA: 1EPC436**

Vinnumber:	<b>W0LPD9EL5D2053649</b>	Versionname:	<b>ZAFIRA</b>
First Registrationdate:	<b>12/02/2013</b>	Fiscalpower:	
Expertise Mileage:	<b>268060</b>	Power Kw:	<b>81</b>
Bodytype:		Body color:	<b>Black</b>
Gearbox:	<b>MAN 6 VIT</b>	Paint type:	<b>Metalic</b>
Transmission:	<b>Front</b>	Rims summer:	<b>Steel</b>
Fueltype:	<b>Diesel</b>	Oil level:	<b>OK</b>
Battery functioning:	<b>Yes</b>	Parking lot:	<b>3305</b>
Number of doors:	<b>5</b>		
Number of seats:	<b>7</b>		
Number head rests:	<b>7</b>		
Rims summer:	<b>Steel</b>		
Category:	<b>Passenger Car</b>		
Oil level:	<b>OK</b>		

**Options**

Radio CD		Central consol F	
GPS storage	<b>HD</b>	Luggage cover	
GPS storage		Front parking sensors	
Windows electric F		Rear parking sensors	
Windows electric R		Type of Tow bar	<b>Tow bar removable</b>
Cruise Control			
Steering wheel multifunctional			
Radio multimedia			
Type of headlighting	<b>Headlighting Halogen</b>		
Type of GPS	<b>GPS big screen color</b>		
Type of Lining	<b>Lining fabrics</b>		
Type of climate control	<b>Manual climate control</b>		
Adaptive cruise control			

**Limited Technical Inspection**

Power steering	<b>Yes</b>	Battery functioning	<b>Yes</b>
Airco functioning	<b>OK</b>	Sound engine	<b>OK</b>
Tires wear profile	<b>OK</b>	Clutch test	<b>OK</b>
Idle position	<b>OK</b>	Wiper fluid level	<b>OK</b>
Engine startingtime	<b>OK</b>	Lighting	<b>OK</b>
Exhaust gass	<b>OK</b>	Wiperblades	<b>OK</b>
Transmission	<b>OK</b>		
Handbrake	<b>OK</b>		

**Degree of wear**

	<b>225/50/17/98 V Steel</b>			
Winter tyres:	Fr.L.	<b>Uniroyal: 4 mm</b>	Fr.R.	<b>Uniroyal: 4 mm</b>
	Re.L.	<b>Michelin: 4 mm</b>	Re.R.	<b>Michelin: 4 mm</b>

**Assistance equipment**

Repair kit	<b>Yes</b>	Compressor	<b>Yes</b>
------------	------------	------------	------------

Total cost ex VAT	1002,35
-------------------	---------

Wheel cover F L, Scratch(es), E - Replace	30,00
---	-------



Door F R, Scratch(es), Acceptable	0,00
-----------------------------------	------

*No pictures to display*

Roof, Bump(s), PDR - Knock out without painting	63,00
---	-------



Door R L, Scratch(es), LI - Repair and paint (complete) 318,35



Rearview mirror housing L, Scratch(es), Acceptable 0,00

No pictures to display

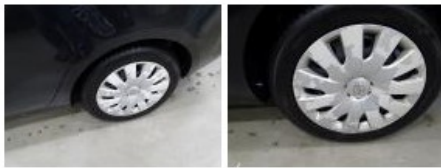
Wing F L, Bump(s), PDR - Knock out without painting 63,00



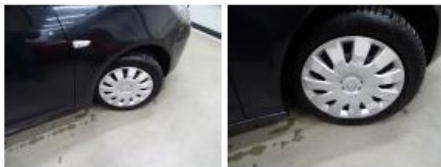
Bumper F R, Scratch(es), It - Spot repair 115,56



Wheel cover R L, Scratch(es), E - Replace 30,00



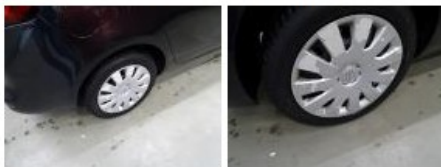
Wheel cover F R, Scratch(es), E - Replace 30,00



Trunk lid covering R, Scratch(es), Smart repair 110,64



Wheel cover R R, Scratch(es), E - Replace 30,00



Bumper R, Scratch(es), LI - Repair and paint (complete) 211,80



Door F L, Bump(s), Acceptable 0,00

No pictures to display

Wing R L, Bump(s), Acceptable 0,00

<i>No pictures to display</i>	
Wing R R, Scratch(es), Acceptable	0,00
<i>No pictures to display</i>	
Door R R, Scratch(es), Acceptable	0,00
<i>No pictures to display</i>	
Rearview mirror housing R, Scratch(es), Acceptable	0,00
<i>No pictures to display</i>	