



VOLVO V40: 1EPB903			
Vinnumber:	<b>YV1MV8481D2040494</b>	Versionname:	<b>V40 D2 Base 115PK</b>
First Registrationdate:	<b>12/02/2013</b>	Fiscalpower:	
Expertise Mileage:	<b>83772</b>	Power Kw:	<b>84</b>
Bodytype:		Body color:	<b>Dark Blue</b>
Gearbox:	<b>MAN 6 VIT</b>	Paint type:	<b>Metalic</b>
Transmission:		Rims summer:	<b>Aluminium</b>
Fueltype:	<b>Diesel</b>	Oil level:	<b>OK</b>
Battery functioning:	<b>Yes</b>	Parking lot:	<b>2820</b>
Number of doors:	<b>5</b>		
Number of seats:	<b>5</b>		
Number head rests:	<b>5</b>		
Rims summer:	<b>Aluminium</b>		
Category:	<b>Passenger Car</b>		
Oil level:	<b>OK</b>		

Options	
Radio CD	Central consol F
Windows electric F	Luggage cover
Windows electric R	Rear parking sensors
Cruise Control	
Steering wheel multifunctional	
Radio multimedia	
Type of headlighting	<b>Headlighting Halogen</b>
Type of GPS	<b>GPS big screen color</b>
Type of Lining	<b>Lining fabrics</b>
Type of climate control	<b>Autom climate control</b>

Limited Technical Inspection			
Power steering	<b>Yes</b>	Battery functioning	<b>Yes</b>
Airco functioning	<b>OK</b>	Sound engine	<b>OK</b>
Tires wear profile	<b>OK</b>	Clutch test	<b>OK</b>
Idle position	<b>OK</b>	Wiper fluid level	<b>NOT OK</b>
Engine startingtime	<b>OK</b>	Lighting	<b>OK</b>
Exhaust gass	<b>OK</b>	Wiperblades	<b>OK</b>
Transmission	<b>OK</b>		
Handbrake	<b>OK</b>		

Degree of wear				
Winter tyres:	<b>205/55/16/91 H LightMetal</b>			
	Fr.L.	<b>Michelin: 6 mm</b>	Fr.R.	<b>Michelin: 6 mm</b>
	Re.L.	<b>Michelin: 6 mm</b>	Re.R.	<b>Michelin: 6 mm</b>

Assistance equipment			
Repair kit	<b>Yes</b>	Compressor	<b>Yes</b>
Total cost ex VAT			<b>2397,96</b>
Bonnet, Bump(s) and scratch(es), LI - Repair and paint (complete)			<b>290,08</b>



Headlight R, Damaged, E - Replace	<b>396,00</b>
-----------------------------------	---------------



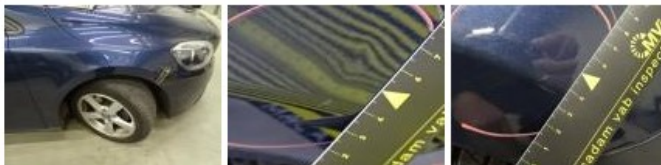
Front bumper, Scratch(es), LI - Repair and paint (complete) 211,80



Interior, Dirty, Cleaning 50,00



Wing F R, Bump(s) and scratch(es), LI - Repair and paint (complete) 220,18



Alloy rim R L, Scratch(es), Acceptable 0,00

No pictures to display

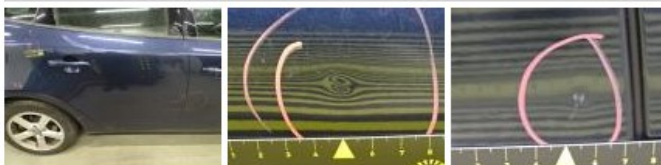
Alloy rim R R, Scratch(es), LI - Repair and paint (complete) 95,00



Roof, Scratch(es), Acceptable 0,00

No pictures to display

Door R R, Bump(s) and scratch(es), LI - Repair and paint (complete) 318,35

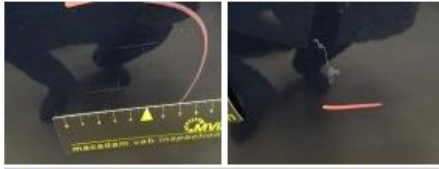




Alloy rim F R, Scratch(es), LI - Repair and paint (complete) 95,00



Door F R, Scratch(es), LI - Repair and paint (complete) 318,35



Alloy rim F L, Scratch(es), LI - Repair and paint (complete) 95,00



Wing R R, Scratch(es), LI - Repair and paint (complete) 308,20

