



| RENAULT Scenic: 1GKI379            |                          |              |                                 |
|------------------------------------|--------------------------|--------------|---------------------------------|
| Vinnnumber:                        | <b>VF1JZ14K650186514</b> | Versionname: | <b>SCENIC Energy Life 110PK</b> |
| First Registrationdate:            | <b>3/03/2014</b>         | Fiscalpower: |                                 |
| Expertise Mileage:                 | <b>77392</b>             | Power Kw:    | <b>81</b>                       |
| Bodytype:                          |                          | Body color:  | <b>Light Grey</b>               |
| Gearbox:                           | <b>MAN 6 VIT</b>         | Paint type:  | <b>Metalic</b>                  |
| Transmission:                      |                          | Rims summer: | <b>Steel</b>                    |
| Fueltype:                          | <b>Diesel</b>            | Oil level:   | <b>OK</b>                       |
| Battery functioning:               | <b>Yes</b>               | Parking lot: | <b>1526</b>                     |
| Number of doors:                   | <b>5</b>                 |              |                                 |
| Number of seats:                   | <b>5</b>                 |              |                                 |
| Number head rests:                 | <b>5</b>                 |              |                                 |
| Rims summer:                       | <b>Steel</b>             |              |                                 |
| Category:                          | <b>Passenger Car</b>     |              |                                 |
| Oil level:                         | <b>OK</b>                |              |                                 |
| Registration Certificate Car (BE): | <b>Yes</b>               |              |                                 |

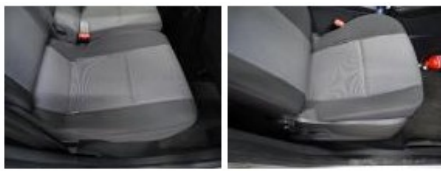
| Options                        |                               |
|--------------------------------|-------------------------------|
| Radio CD                       | Central consol F              |
| Windows electric F             | Luggage cover                 |
| Windows electric R             |                               |
| Cruise Control                 |                               |
| Steering wheel multifunctional |                               |
| Radio multimedia               |                               |
| Type of headlighting           | <b>Headlighting Halogen</b>   |
| Type of GPS                    | <b>GPS big screen color</b>   |
| Type of Lining                 | <b>Lining fabrics</b>         |
| Type of climate control        | <b>Manual climate control</b> |

| Limited Technical Inspection |            |                     |            |
|------------------------------|------------|---------------------|------------|
| Power steering               | <b>Yes</b> | Battery functioning | <b>Yes</b> |
| Airco functioning            | <b>OK</b>  | Sound engine        | <b>OK</b>  |
| Tires wear profile           | <b>OK</b>  | Clutch test         | <b>OK</b>  |
| Idle position                | <b>OK</b>  | Wiper fluid level   | <b>OK</b>  |
| Engine startingtime          | <b>OK</b>  | Lighting            | <b>OK</b>  |
| Exhaust gass                 | <b>OK</b>  | Wiperblades         | <b>OK</b>  |
| Transmission                 | <b>OK</b>  |                     |            |
| Handbrake                    | <b>OK</b>  |                     |            |

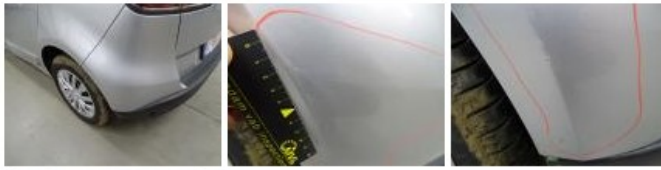
| Degree of wear |                             |                       |       |                       |
|----------------|-----------------------------|-----------------------|-------|-----------------------|
|                | <b>205/60/16/92 H Steel</b> |                       |       |                       |
| Summer tyres:  | Fr.L.                       | <b>Michelin: 4 mm</b> | Fr.R. | <b>Michelin: 4 mm</b> |
|                | Re.L.                       | <b>Michelin: 6 mm</b> | Re.R. | <b>Michelin: 6 mm</b> |

| Assistance equipment              |            |
|-----------------------------------|------------|
| Spare wheel                       | <b>Yes</b> |
| Total cost ex VAT                 | 426,68     |
| Wing F L, Scratch(es), Acceptable | 0,00       |
| <i>No pictures to display</i>     |            |
| Interior, Dirty, Cleaning         | 50,00      |





Bumper corner R L, Scratch(es), It - Spot repair 115,56



Door R R, Scratch(es), It - Spot repair 115,56



Front bumper, Scratch(es), Acceptable 0,00

No pictures to display

Door F R, Scratch(es), It - Spot repair 115,56



Wheel cover F R, Scratch(es), E - Replace 30,00



Wheel cover R R, Scratch(es), Acceptable 0,00

No pictures to display

Wheel cover F L, Scratch(es), Acceptable 0,00

No pictures to display