



**AUDI A4: 1EUU575**

Vinnumber:	<b>WAUZZZ8K4DA220388</b>	Versionname:	<b>A4 BER TDie 136PK</b>
First Registrationdate:	<b>26/03/2013</b>	Fiscalpower:	
Expertise Mileage:	<b>119480</b>	Power Kw:	<b>100</b>
Bodytype:	<b>Berline</b>	Body color:	<b>Black</b>
Gearbox:	<b>MAN 6 VIT</b>	Paint type:	<b>Metalic</b>
Transmission:	<b>Front</b>	Rims summer:	<b>Aluminium</b>
Fueltype:	<b>Diesel</b>	Oil level:	<b>OK</b>
Battery functioning:	<b>Yes</b>	Parking lot:	<b>4610</b>
Number of doors:	<b>5</b>		
Number of seats:	<b>5</b>		
Number head rests:	<b>5</b>		
Rims summer:	<b>Aluminium</b>		
Category:	<b>Passenger Car</b>		
Oil level:	<b>OK</b>		

**Options**

Radio CD		Central consol F
GPS storage	<b>HD</b>	Front parking sensors
GPS storage		Rear parking sensors
Windows electric F		
Windows electric R		
Cruise Control		
Steering wheel multifunctional		
Radio multimedia		
Type of headlighting	<b>Headlighting Xenon</b>	
Type of GPS	<b>GPS big screen color</b>	
Type of Lining	<b>Lining leather</b>	
Type of climate control	<b>Autom climate control</b>	

**Limited Technical Inspection**

Airco functioning	<b>OK</b>	Battery functioning	<b>Yes</b>
Tires wear profile	<b>OK</b>	Power steering	<b>Yes</b>
Idle position	<b>OK</b>	Sound engine	<b>OK</b>
Engine startingtime	<b>OK</b>	Clutch test	<b>OK</b>
Exhaust gass	<b>OK</b>	Wiper fluid level	<b>OK</b>
Handbrake	<b>OK</b>	Transmission	<b>OK</b>
		Lighting	<b>OK</b>
		Wiperblades	<b>OK</b>

**Degree of wear**

<b>205/60/16/92 V LightMetal</b>				
Summer tyres:	Fr.L.	<b>Michelin: 4 mm</b>	Fr.R.	<b>Michelin: 4 mm</b>
	Re.L.	<b>Michelin: 4 mm</b>	Re.R.	<b>Michelin: 4 mm</b>

**Assistance equipment**

Repair kit	<b>Yes</b>	Compressor	<b>Yes</b>
------------	------------	------------	------------

<b>Total cost ex VAT</b>	<b>916,68</b>
--------------------------	---------------

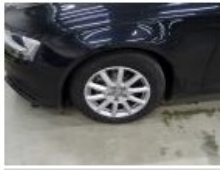
<b>Wing F L, Chemical polution, LI - Repair and paint (complete)</b>	<b>220,18</b>
--	---------------



<b>Door panel F R, Stain, Cleaning</b>	<b>25,00</b>
--	--------------



Alloy rim F L, Scratch(es), LI - Repair and paint (complete)	95,00
--	-------



Door R L, Scratch(es), Acceptable	0,00
-----------------------------------	------

*No pictures to display*

Bonnet, Damaged, Acceptable	0,00
-----------------------------	------



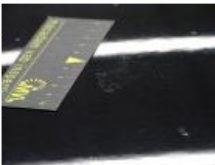
Windscreen, Stone chip(s), Acceptable	0,00
---------------------------------------	------

*No pictures to display*

Wing R R, Scratch(es), Acceptable	0,00
-----------------------------------	------

*No pictures to display*

Roof, Chemical pollution, LI - Repair and paint (complete)	481,50
--	--------



Alloy rim F R, Scratch(es), LI - Repair and paint (complete)	95,00
--	-------

