



**RENAULT Megane: 1FVB365**

Vinnnumber:	<b>VF1BZ1A0749472674</b>	Versionname:	<b>MEGANE BER Authentique 90PK</b>
First Registrationdate:	<b>4/11/2013</b>	Fiscalpower:	<b>90PK</b>
Expertise Mileage:	<b>111324</b>	Power Kw:	<b>66</b>
Bodytype:		Body color:	<b>Grey</b>
Gearbox:	<b>MAN 5 VIT</b>	Paint type:	<b>Metalic</b>
Transmission:		Rims summer:	<b>Steel</b>
Fueltype:	<b>Diesel</b>	Oil level:	<b>OK</b>
Battery functioning:	<b>Yes</b>	Parking lot:	<b>1129</b>
Number of doors:	<b>5</b>		
Number of seats:	<b>5</b>		
Number head rests:	<b>5</b>		
Rims summer:	<b>Steel</b>		
Category:	<b>Passenger Car</b>		
Oil level:	<b>OK</b>		
Registration Certificate Car (BE):	<b>Yes</b>		

**Options**

Radio CD	Luggage cover
Windows electric F	
Radio multimedia	
Type of headlighting:	<b>Headlighting Halogen</b>
Type of Lining:	<b>Lining fabrics</b>
Type of climate control:	<b>Manual climate control</b>

**Limited Technical Inspection**

Airco functioning	<b>OK</b>	Battery functioning	<b>Yes</b>
Tires wear profile	<b>OK</b>	Power steering	<b>Yes</b>
Idle position	<b>OK</b>	Sound engine	<b>OK</b>
Engine startingtime	<b>OK</b>	Clutch test	<b>OK</b>
Exhaust gass	<b>OK</b>	Wiper fluid level	<b>OK</b>
Handbrake	<b>OK</b>	Transmission	<b>OK</b>
		Lighting	<b>OK</b>
		Wiperblades	<b>OK</b>

**Degree of wear**

	<b>195/65/15/91 T Steel</b>			
Winter tyres:	Fr.L.	<b>Michelin: 4 mm</b>	Fr.R.	<b>Michelin: 4 mm</b>
	Re.L.	<b>Michelin: 4 mm</b>	Re.R.	<b>Michelin: 4 mm</b>

**Assistance equipment**

Spare wheel	<b>Yes</b>	Jack	<b>Yes</b>
-------------	------------	------	------------

Total cost ex VAT	3591,42
Wheel cover F R, Scratch(es), E - Replace	30,00



Wing R L, Bump(s) and scratch(es), LI - Repair and paint (complete)	308,20
---	--------



Luggage space cover, Damaged, Smart repair 40,00



Rocker panel inner F R, Bump(s), LI - Repair and paint (complete) 115,56



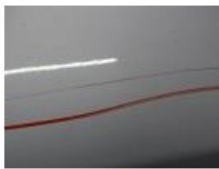
Interior, Dirty, Cleaning 100,00



Bumper R, Bump(s) and scratch(es), Le - Replace and paint 651,00



Door R L, Scratch(es), LI - Repair and paint (complete) 318,35



Wheel cover F L, Scratch(es), E - Replace 30,00



Wheel cover R L, Scratch(es), E - Replace

30,00



Wing R R, Bump(s) and scratch(es), LI - Repair and paint (complete)

308,20



Backrest cover F R, Damaged, E - Replace

360,00



Wheel cover R R, Damaged, E - Replace

30,00



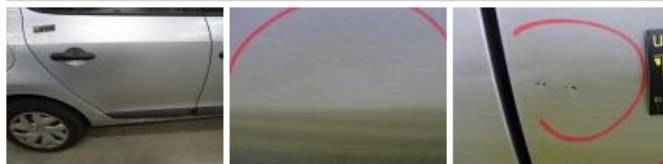
Roof, Not original part, Acceptable

0,00



Door R R, Bump(s) and scratch(es), LI - Repair and paint (complete)

318,35



Door F R, Scratch(es), Acceptable

0,00

No pictures to display

Tailgate, Bump(s), LI - Repair and paint (complete)

301,68







Bonnet, Bump(s) and scratch(es), LI - Repair and paint (complete) 290,08



Backrest cover F L, Damaged, E - Replace 360,00

