



<b>BMW 3: 1ERJ389</b>			
Vinnumber:	<b>WBA3K11090F820518</b>	Versionname:	<b>3 TOURING 318d 136PK</b>
First Registrationdate:	<b>1/03/2013</b>	Fiscalpower:	
Expertise Mileage:	<b>145398</b>	Power Kw:	<b>100</b>
Bodytype:	<b>Hatchback</b>	Body color:	<b>Silver</b>
Gearbox:	<b>MAN 6 VIT</b>	Paint type:	<b>Metalic</b>
Transmission:	<b>Back</b>	Rims summer:	<b>Steel</b>
Fueltype:	<b>Diesel</b>	Oil level:	<b>OK</b>
Battery functioning:	<b>Yes</b>	Parking lot:	<b>1412</b>
Number of doors:	<b>4</b>		
Number of seats:	<b>5</b>		
Number head rests:	<b>5</b>		
Rims summer:	<b>Steel</b>		
Category:	<b>Passenger Car</b>		
Oil level:	<b>OK</b>		

<b>Options</b>	
Radio CD	Central consol F
Windows electric F	
Windows electric R	
Steering wheel multifunctional	
Radio multimedia	
Type of headlighting	<b>Headlighting Halogen</b>
Type of GPS	<b>GPS big screen color</b>
Type of Lining	<b>Lining artificial leather</b>
Type of climate control	<b>Autom climate control</b>

<b>Limited Technical Inspection</b>			
Airco functioning	<b>OK</b>	Battery functioning	<b>Yes</b>
Tires wear profile	<b>OK</b>	Power steering	<b>Yes</b>
Idle position	<b>OK</b>	Sound engine	<b>OK</b>
Engine startingtime	<b>OK</b>	Clutch test	<b>OK</b>
Exhaust gass	<b>OK</b>	Wiper fluid level	<b>OK</b>
Handbrake	<b>OK</b>	Transmission	<b>OK</b>
		Lighting	<b>OK</b>
		Wiperblades	<b>OK</b>

<b>Degree of wear</b>				
	<b>205/60/16/92 H Steel</b>			
Winter tyres:	Fr.L.	<b>Michelin: 4 mm</b>	Fr.R.	<b>Michelin: 4 mm</b>
	Re.L.	<b>Michelin: 5 mm</b>	Re.R.	<b>Michelin: 5 mm</b>

<b>Assistance equipment</b>			
Repair kit	<b>Yes</b>	Compressor	<b>Yes</b>
Total cost ex VAT			<b>789,44</b>
Door panel R L, Damaged, Smart repair			<b>110,64</b>



Bonnet, Bad repair, Paint	<b>0,00</b>
---------------------------	-------------



Wheel cover R R, Scratch(es), E - Replace	30,00
---	-------



Front bumper, Scratch(es), Acceptable	0,00
---------------------------------------	------

*No pictures to display*

Protection plate M, Strained , E - Replace	74,00
--	-------



Rearlight R , Damaged, E - Replace	114,00
------------------------------------	--------



Wing R L, Bump(s), Acceptable	0,00
-------------------------------	------

*No pictures to display*

Bumper R, Bump(s) and scratch(es), LI - Repair and paint (complete)	307,80
---	--------



Door F R, Bump(s), PDR - Knock out without painting	63,00
---	-------



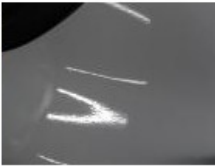
Door F R, Bad repair, Paint	0,00
-----------------------------	------



Wheel cover F L, Broken, E - Replace	30,00
--------------------------------------	-------



Wing R L, Bad repair, Paint	0,00
-----------------------------	------



Wheel cover F R, Scratch(es), E - Replace	30,00
---	-------



Wheel cover R L, Scratch(es), E - Replace

30,00

