


**FORD C-MAX: 1JRH822**

Vinnnumber:	<b>WF0JXXGCBJFC09032</b>	Versionname:	<b>1.6 TDCI 85KW S/S TREND STYLE</b>
First Registrationdate:	<b>6/02/2015</b>	Fiscalpower:	
Expertise Mileage:	<b>160906</b>	Power Kw:	<b>85</b>
Bodytype:	<b>Hatchback</b>	Body color:	<b>Grey</b>
Gearbox:	<b>MAN 6 VIT</b>	Paint type:	<b>Metalic</b>
Transmission:	<b>Front</b>	Rims summer:	<b>Aluminium</b>
Fueltype:	<b>Diesel</b>	Oil level:	<b>OK</b>
Battery functioning:	<b>Yes</b>	Parking lot:	<b>3604</b>
Number of doors:	<b>5</b>		
Number of seats:	<b>5</b>		
Number head rests:	<b>5</b>		
Rims summer:	<b>Aluminium</b>		
Category:	<b>Passenger Car</b>		
Oil level:	<b>OK</b>		
Registration Certificate Car (BE):	<b>Yes</b>		

**Options**

Radio CD		Central consol F	
GPS storage		Luggage cover	
GPS storage	<b>SD</b>	Rear parking sensors	
Windows electric F		Type of Tow bar	<b>Tow bar fixed</b>
Windows electric R			
Cruise Control			
Steering wheel multifunctional			
Type of headlighting	<b>Headlighting Halogen</b>		
Type of GPS	<b>GPS big screen color</b>		
Type of Lining	<b>Lining fabrics</b>		
Type of climate control	<b>Manual climate control</b>		

**Limited Technical Inspection**

Airco functioning	<b>OK</b>	Battery functioning	<b>Yes</b>
Tires wear profile	<b>OK</b>	Power steering	<b>Yes</b>
Idle position	<b>OK</b>	Sound engine	<b>OK</b>
Engine startingtime	<b>OK</b>	Clutch test	<b>OK</b>
Exhaust gass	<b>OK</b>	Wiper fluid level	<b>OK</b>
Handbrake	<b>OK</b>	Transmission	<b>OK</b>
		Lighting	<b>OK</b>
		Wiperblades	<b>OK</b>

**Degree of wear**

	<b>215/55/16/93 H LightMetal</b>			
Winter tyres:	Fr.L.	<b>Bridgestone: 4 mm</b>	Fr.R.	<b>Bridgestone: 4 mm</b>
	Re.L.	<b>Bridgestone: 4 mm</b>	Re.R.	<b>Bridgestone: 4 mm</b>

**Assistance equipment**

Repair kit	<b>Yes</b>	Compressor	<b>Yes</b>
------------	------------	------------	------------

Total cost ex VAT	1040,68
-------------------	---------

Tailgate, Scratch(es), Acceptable	0,00
-----------------------------------	------

*No pictures to display*

Alloy rim F R polished, Scratch(es), LI - Repair and paint (complete)	95,00
---	-------



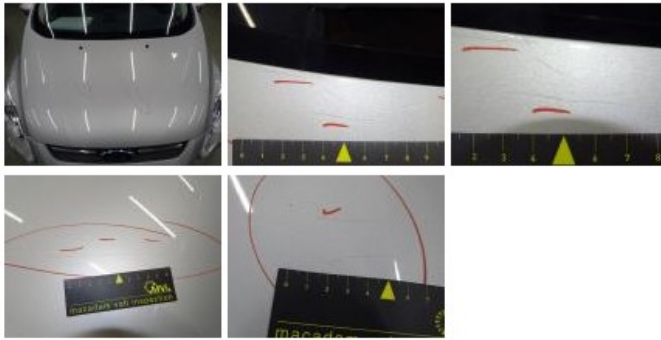
Door panel R R, Scratch(es), Acceptable	0,00
---	------

*No pictures to display*

Wing R R, Bump(s), PDR - Knock out without painting	159,00
---	--------



Bonnet, Scratch(es), LI - Repair and paint (complete) 290,08



Rear window, Scratch(es), Acceptable 0,00

No pictures to display

Door R L, Scratch(es), Acceptable 0,00

No pictures to display

Wing R L, Scratch(es), Acceptable 0,00

No pictures to display

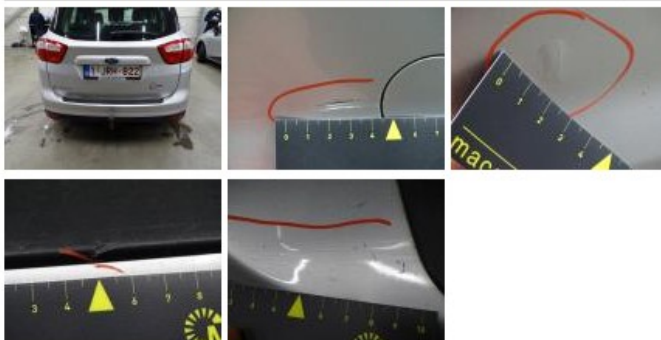
Front bumper, Scratch(es), LI - Repair and paint (complete) 211,80



Door panel R L, Scratch(es), Acceptable 0,00

No pictures to display

Bumper R, Bump(s) and scratch(es), LI - Repair and paint (complete) 259,80



Seat cover R R, Stain, Cleaning 25,00



Wing F R, Scratch(es), Acceptable 0,00

No pictures to display

Rearview mirror housing R, Scratch(es), Acceptable 0,00

No pictures to display

Trunk lid covering R, Scratch(es), Acceptable 0,00

No pictures to display

Windscreen, Stone chip(s), Windscreen repair 0,00

