



BMW 1: 1GDC582			
Vinnnumber:	WBA1C91020J518004	Versionname:	1 HATCH 116d Eff.Dyn.Ed. 116PK
First Registrationdate:	6/01/2014	Fiscalpower:	
Expertise Mileage:	43047	Power Kw:	85
Bodytype:		Body color	Light Blue
Gearbox:	MAN 6 VIT	Paint type	Metalic
Transmission:		Rims summer	Aluminium
Fueltype:	Diesel	Oil level	OK
Battery functioning	Yes	Parking lot	2511
Number of doors	5		
Number of seats	5		
Number head rests	5		
Rims summer	Aluminium		
Category	Passenger Car		
Oil level	OK		
Registration Certificate Car (BE)	Yes		

Options	
Radio CD	Central consol F
Windows electric F	Luggage cover
Windows electric R	Rear parking sensors
Cruise Control	
Steering wheel multifunctional	
Seats F heated	
Radio multimedia	
Type of headlighting	Headlighting Halogen
Type of Lining	Lining leather
Type of climate control	Autom climate control

Limited Technical Inspection			
Airco functioning	OK	Battery functioning	Yes
Tires wear profile	OK	Power steering	Yes
Idle position	OK	Sound engine	OK
Engine startingtime	OK	Clutch test	OK
Exhaust gass	OK	Wiper fluid level	OK
Handbrake	OK	Transmission	OK
		Lighting	OK
		Wiperblades	OK

Degree of wear				
	205/55/16/91 H LightMetal			
Winter tyres:	Fr.L.	Michelin: 7 mm	Fr.R.	Michelin: 7 mm
	Re.L.	Michelin: 6 mm	Re.R.	Michelin: 6 mm

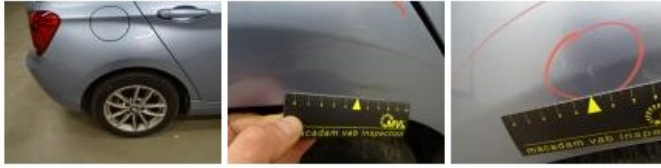
Assistance equipment			
Repair kit	Yes	Compressor	Yes
Total cost ex VAT			195,00
Interior, Dirty, Cleaning			100,00



Alloy rim R L, Scratch(es), LI - Repair and paint (complete)	95,00
---	--------------



Wing R R, Bump(s) and scratch(es), LI - Repair and paint (complete) 0,00



Bumper R, Scratch(es), Acceptable 0,00

No pictures to display