



**BMW 2 GRAN TOURER: 1PDF791**

Vinnnumber:	<b>WBA2E510305E05729</b>	Versionname:	<b>2.0 218D (100KW) GRAN TOURER</b>
First Registrationdate:	<b>9/06/2016</b>	Fiscalpower:	
Expertise Mileage:	<b>61941</b>	Power Kw:	<b>100</b>
Bodytype:	<b>MPV</b>	Body color:	<b>Grey</b>
Gearbox:	<b>Automatic</b>	Paint type:	<b>Metalic</b>
Transmission:	<b>Front</b>	Rims summer:	<b>Aluminium</b>
Fueltype:	<b>Diesel</b>	Oil level:	<b>OK</b>
Battery functioning:	<b>Yes</b>	Parking lot:	<b>4805</b>
Number of doors:	<b>5</b>		
Number of seats:	<b>7</b>		
Number head rests:	<b>6</b>		
Rims summer:	<b>Aluminium</b>		
Category:	<b>Passenger Car</b>		
Oil level:	<b>OK</b>		
Registration Certificate Car (BE):	<b>Yes</b>		

**Options**

GPS storage		Central consol F	
GPS storage	<b>HD</b>	Luggage cover	
Windows electric F		Rear parking sensors	
Windows electric R		Type of Tow bar	<b>Tow bar fixed</b>
Cruise Control			
Steering wheel multifunctional			
Seats F heated			
Type of headlighting	<b>Headlighting Halogen</b>		
Type of GPS	<b>GPS big screen color</b>		
Type of Lining	<b>Lining fabrics</b>		
Type of climate control	<b>Autom climate control</b>		

**Limited Technical Inspection**

Airco functioning	<b>OK</b>	Battery functioning	<b>Yes</b>
Tires wear profile	<b>OK</b>	Power steering	<b>Yes</b>
Idle position	<b>OK</b>	Sound engine	<b>OK</b>
Engine startingtime	<b>OK</b>	Clutch test	<b>OK</b>
Exhaust gass	<b>OK</b>	Wiper fluid level	<b>OK</b>
Handbrake	<b>OK</b>	Transmission	<b>OK</b>
		Lighting	<b>OK</b>
		Wiperblades	<b>OK</b>

**Degree of wear**

	<b>205/60/16/92 H LightMetal</b>			
Winter tyres:	Fr.L.	<b>Michelin: 7 mm</b>	Fr.R.	<b>Michelin: 7 mm</b>
	Re.L.	<b>Michelin: 8 mm</b>	Re.R.	<b>Michelin: 8 mm</b>

**Assistance equipment**

Repair kit	<b>Yes</b>	Compressor	<b>Yes</b>
<b>Total cost ex VAT</b>			<b>580,00</b>
<b>Alloy rim F L, Scratch(es), Acceptable</b>			<b>0,00</b>



<b>Alloy rim R L, Scratch(es), Acceptable</b>			<b>0,00</b>
<i>No pictures to display</i>			
<b>Seat cover R, Dirty, Cleaning</b>			<b>0,00</b>



Door R L, Scratch(es), Acceptable 0,00

No pictures to display

Headrest R L, Missing, E - Replace 60,00



Roof, Chemical polution, Acceptable 0,00

No pictures to display

Door R L, Scratch(es), Acceptable 0,00

No pictures to display

Bumper R, Scratch(es), Acceptable 0,00

No pictures to display

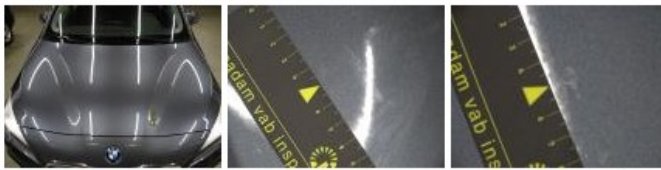
Front bumper, Scratch(es), LI - Repair and paint (complete) 211,80



Wing F L, Scratch(es), Acceptable 0,00

No pictures to display

Bonnet, Chemical polution, Acceptable 0,00



Wing R L, Scratch(es), LI - Repair and paint (complete) 308,20



License plate F, Damaged, Acceptable 0,00

No pictures to display