


**MERCEDES A: 1E00107**

Vinnnumber:	<b>WDD1760011J059770</b>	Versionname:	<b>A 200 CDI BE Style 136PK</b>
First Registrationdate:	<b>7/02/2013</b>	Fiscalpower:	
Expertise Mileage:	<b>111801</b>	Power Kw:	<b>100</b>
Bodytype:	<b>Hatchback</b>	Body color:	<b>Grey</b>
Gearbox:	<b>MAN 6 VIT</b>	Paint type:	<b>Metalic</b>
Transmission:	<b>Front</b>	Rims summer:	<b>Aluminium</b>
Fueltype:	<b>Diesel</b>	Oil level:	<b>OK</b>
Battery functioning:	<b>Yes</b>	Parking lot:	<b>4125</b>
Number of doors:	<b>5</b>		
Number of seats:	<b>5</b>		
Number head rests:	<b>5</b>		
Rims summer:	<b>Aluminium</b>		
Category:	<b>Passenger Car</b>		
Oil level:	<b>OK</b>		

**Options**

Radio CD		Central consol F
GPS storage	<b>HD</b>	Luggage cover
GPS storage		Front parking sensors
Windows electric F		Rear parking sensors
Windows electric R		
Steering wheel multifunctional		
Type of headlighting	<b>Headlighting Xenon</b>	
Type of GPS	<b>GPS big screen color</b>	
Type of Lining	<b>Lining semi-leather</b>	
Type of climate control	<b>Autom climate control</b>	

**Limited Technical Inspection**

Airco functioning	<b>OK</b>	Battery functioning	<b>Yes</b>
Tires wear profile	<b>OK</b>	Power steering	<b>Yes</b>
Idle position	<b>OK</b>	Sound engine	<b>OK</b>
Engine startingtime	<b>OK</b>	Clutch test	<b>OK</b>
Exhaust gass	<b>OK</b>	Wiper fluid level	<b>OK</b>
Handbrake	<b>OK</b>	Transmission	<b>OK</b>
		Lighting	<b>OK</b>
		Wiperblades	<b>OK</b>

**Degree of wear**

	<b>225/45/17/91 H LightMetal</b>			
Winter tyres:	Fr.L.	<b>Michelin: 7 mm</b>	Fr.R.	<b>Michelin: 7 mm</b>
	Re.L.	<b>Michelin: 6 mm</b>	Re.R.	<b>Michelin: 6 mm</b>

**Assistance equipment**

Repair kit	<b>Yes</b>	Compressor	<b>Yes</b>
------------	------------	------------	------------

Total cost ex VAT	<b>913,77</b>
Door R R, Bump(s) and scratch(es), Acceptable	<b>0,00</b>
<i>No pictures to display</i>	
Wing F R, Scratch(es), Acceptable	<b>0,00</b>
<i>No pictures to display</i>	
Bumper R, Scratch(es), Acceptable	<b>0,00</b>
<i>No pictures to display</i>	
Door R L, Scratch(es), Acceptable	<b>0,00</b>
<i>No pictures to display</i>	
Alloy rim R R, Scratch(es), LI - Repair and paint (complete)	<b>95,00</b>



Alloy rim F R, Scratch(es), E - Replace

235,20



Windscreen, Stone chip(s), Acceptable

0,00

*No pictures to display*

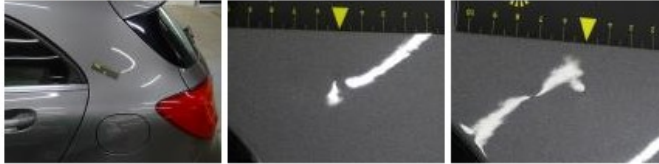
Front bumper, Scratch(es), Acceptable

0,00

*No pictures to display*

Wing R L, Bump(s) and scratch(es), LI - Repair and paint (complete)

308,20



Headlight R, Scratch(es), 67 - Polish

55,19



Wing F L, Chemical pollution, LI - Repair and paint (complete)

220,18

