



RENAULT Grand Scenic: 1ESV132

Vinnnumber:	VF1JZ14B648788080	Versionname:	GR.SCENIC Energ.Privilege
First Registrationdate:	12/03/2013	Fiscalpower:	7pl.FAP 110PK
Expertise Mileage:	109826	Power Kw:	81
Bodytype:	MPV	Body color:	Beige
Gearbox:	MAN 6 VIT	Paint type:	Metalic
Transmission:	Front	Rims summer:	Aluminium
Fueltype:	Diesel	Oil level:	OK
Battery functioning:	Yes	Parking lot:	1629
Number of doors:	5		
Number of seats:	7		
Number head rests:	7		
Rims summer:	Aluminium		
Category:	Passenger Car		
Oil level:	OK		

Options

Radio CD	Seats electric F L
Windows electric F	Central consol F
Windows electric R	Luggage cover
Cruise Control	Front parking sensors
Steering wheel multifunctional	Rear parking sensors
Seats F heated	
Radio multimedia	
Type of headlighting Headlighting Xenon	
Type of GPS GPS big screen color	
Type of Lining Lining leather and alcantara	
Type of climate control Autom climate control	

Limited Technical Inspection

Airco functioning	OK	Battery functioning	Yes
Tires wear profile	OK	Power steering	Yes
Idle position	OK	Sound engine	OK
Engine startingtime	OK	Clutch test	OK
Exhaust gass	OK	Wiper fluid level	OK
Handbrake	OK	Transmission	OK
		Lighting	OK
		Wiperblades	OK

Degree of wear

	215/50/17/95 V LightMetal			
Winter tyres:	Fr.L.	Continental: 3 mm	Fr.R.	Continental: 3 mm
	Re.L.	Continental: 4 mm	Re.R.	Continental: 4 mm

Assistance equipment

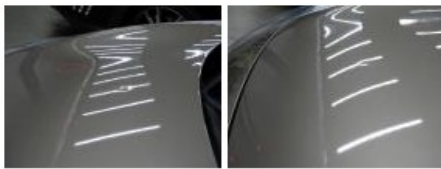
Emergency spare wheel	Yes	Jack	Yes
-----------------------	------------	------	------------

Total cost ex VAT	3842,67
Wing R R, Bump(s) and scratch(es), LI - Repair and paint (complete)	308,20



Bonnet, Hail damage, PDR - Hail 500,00





Door R R, Bump(s) and scratch(es), Acceptable 0,00

No pictures to display

Alloy rim F R, Scratch(es), LI - Repair and paint (complete) 95,00



Door R L, Bump(s) and scratch(es), LI - Repair and paint (complete) 318,35



Bumper R, Bump(s), LI - Repair and paint (complete) 211,80



Roof, Hail damage, PDR - Hail 2250,00



Alloy rim F L, Scratch(es), Acceptable 0,00

No pictures to display

Seat cover R L, Hole, Smart repair 64,32



Alloy rim R R, Scratch(es), LI - Repair and paint (complete) 95,00

