



SKODA Superb: 1DKO672			
Vinnnumber:	<b>TMBJJ73T0C9070002</b>	Versionname:	<b>SUPERB COMBI GreenLin.Ambition DPF 105PK</b>
First Registrationdate:	<b>11/06/2012</b>	Fiscalpower:	<b>105PK</b>
Expertise Mileage:	<b>143149</b>	Power Kw:	<b>77</b>
Bodytype:	<b>Break</b>	Body color	<b>Black</b>
Gearbox:	<b>MAN 5 VIT</b>	Paint type	<b>Metalic</b>
Transmission:	<b>Front</b>	Rims summer	<b>Aluminium</b>
Fueltype:	<b>Diesel</b>	Oil level	<b>OK</b>
Battery functioning	<b>Yes</b>	Parking lot	<b>1733</b>
Number of doors	<b>5</b>		
Number of seats	<b>5</b>		
Number head rests	<b>5</b>		
Rims summer	<b>Aluminium</b>		
Category	<b>Passenger Car</b>		
Oil level	<b>OK</b>		

Options	
Radio CD	Central consol F
GPS storage	<b>HD</b> Luggage cover
GPS storage	
Windows electric F	
Windows electric R	
Cruise Control	
Steering wheel multifunctional	
Type of headlighting	<b>Headlighting Halogen</b>
Type of GPS	<b>GPS big screen color</b>
Type of Lining	<b>Lining fabrics</b>
Type of climate control	<b>Autom climate control</b>

Limited Technical Inspection			
Airco functioning	<b>OK</b>	Battery functioning	<b>Yes</b>
Tires wear profile	<b>OK</b>	Power steering	<b>Yes</b>
Idle position	<b>OK</b>	Sound engine	<b>OK</b>
Engine startingtime	<b>OK</b>	Clutch test	<b>OK</b>
Exhaust gass	<b>OK</b>	Wiper fluid level	<b>OK</b>
Handbrake	<b>OK</b>	Transmission	<b>OK</b>
		Lighting	<b>OK</b>
		Wiperblades	<b>OK</b>

Degree of wear			
Summer tyres:	<b>205/55/16/91 H LightMetal</b>		
	Fr.L.	Fr.R.	Continental: 3 mm
	Re.L.	Re.R.	<b>Uniroyal: 7 mm</b>

Assistance equipment			
Repair kit	<b>Yes</b>	Compressor	<b>Yes</b>
Total cost ex VAT			2041,23
Rear wiper blade, Not functioning (well), E - Replace			35,00



Alloy rim F L, Scratch(es), LI - Repair and paint (complete)	95,00
--	-------



Wing R R, Scratch(es), Acceptable 0,00

No pictures to display

Wing R L, Scratch(es), Acceptable 0,00

No pictures to display

Alloy rim F R, Scratch(es), LI - Repair and paint (complete) 95,00



Front bumper, Scratch(es), LI - Repair and paint (complete) 254,16



Door R R, Bump(s) and scratch(es), LI - Repair and paint (complete) 382,02



Tailgate, Scratch(es), Acceptable 0,00

No pictures to display

Door R L, Scratch(es), Acceptable 0,00

No pictures to display

Wing F R, Scratch(es), Acceptable 0,00

No pictures to display

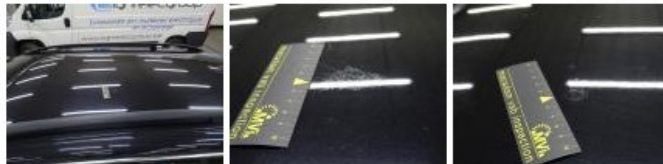
Bumper R, Scratch(es), LI - Repair and paint (complete) 254,16



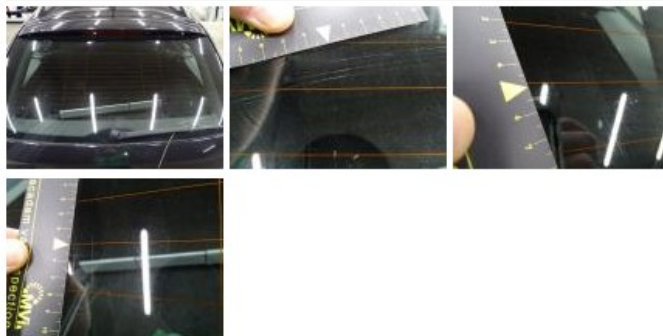
Door F L, Scratch(es), Acceptable 0,00

No pictures to display

Roof, Chemical polution, LI - Repair and paint (complete) 577,80



Rear window, Scratch(es), E - Replace 0,00



Door F R, Scratch(es), Acceptable 0,00

No pictures to display

Bonnet, Chemical pollution, LI - Repair and paint (complete)

348,09



Wing F L, Scratch(es), Acceptable

0,00

*No pictures to display*