



VOLVO V40: 1ESH218

Vinnnumber:	YV1MV8481D2045642	Versionname:	V40 D2 Base 115PK
First Registrationdate:	7/03/2013	Fiscalpower:	
Expertise Mileage:	151655	Power Kw:	84
Bodytype:	Hatchback	Body color:	White
Gearbox:	MAN 6 VIT	Paint type:	Opaque
Transmission:	Front	Rims summer:	Aluminium
Fueltype:	Diesel	Oil level:	OK
Battery functioning:	Yes	Parking lot:	4201
Number of doors:	5		
Number of seats:	5		
Number head rests:	5		
Rims summer:	Aluminium		
Category:	Passenger Car		
Oil level:	OK		

Options

Radio CD	Central consol F
Windows electric F	Luggage cover
Windows electric R	Rear parking sensors
Cruise Control	Type of Tow bar
Steering wheel multifunctional	Tow bar fixed
Type of headlighting	Headlighting Halogen
Type of Lining	Lining fabrics
Type of climate control	Autom climate control

Limited Technical Inspection

Airco functioning	OK	Battery functioning	Yes
Tires wear profile	OK	Power steering	Yes
Idle position	OK	Sound engine	OK
Engine startingtime	OK	Clutch test	OK
Exhaust gass	OK	Wiper fluid level	OK
Handbrake	OK	Transmission	OK
		Lighting	OK
		Wiperblades	OK

Degree of wear

	205/55/16/91 T LightMetal			
Winter tyres:	Fr.L.	Bridgestone: 5 mm	Fr.R.	Bridgestone: 5 mm
	Re.L.	Bridgestone: 5 mm	Re.R.	Bridgestone: 5 mm

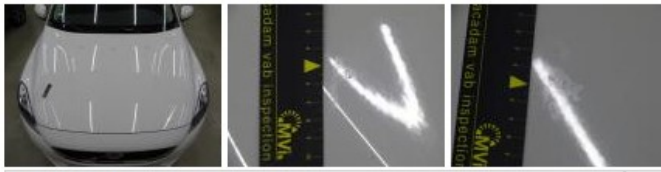
Assistance equipment

Emergency spare wheel	Yes	Jack	Yes
-----------------------	------------	------	------------

Total cost ex VAT	404,08
Front bumper, Stone chip(s), Acceptable	0,00
<i>No pictures to display</i>	
Alloy rim F L, Scratch(es), Acceptable	0,00
<i>No pictures to display</i>	
Bumper R, Scratch(es), Acceptable	0,00
<i>No pictures to display</i>	
Door panel F L, Damaged, E - Replace	114,00



Bonnet, Chemical polution, LI - Repair and paint (complete)	290,08
---	--------



Rear window, Scratch(es), E - Replace 0,00



Armrest lid F Mid, Damaged, Acceptable 0,00

