



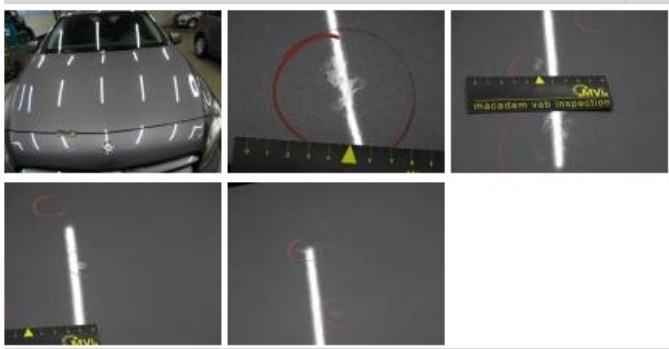
MERCEDES A: 1KXP914			
Vinnnumber:	<b>WDD1760121V074016</b>	Versionname:	<b>1.5 A 180 CDI</b>
First Registrationdate:	<b>27/07/2015</b>	Fiscalpower:	
Expertise Mileage:	<b>44145</b>	Power Kw:	<b>80</b>
Bodytype:		Body color:	<b>Grey</b>
Gearbox:	<b>MAN 6 VIT</b>	Paint type:	<b>Metalic</b>
Transmission:		Rims summer:	<b>Steel</b>
Fueltype:	<b>Diesel</b>	Oil level:	<b>OK</b>
Battery functioning:	<b>Yes</b>	Parking lot:	<b>1615</b>
Number of doors:	<b>5</b>		
Number of seats:	<b>5</b>		
Number head rests:	<b>5</b>		
Rims summer:	<b>Steel</b>		
Category:	<b>Passenger Car</b>		
Oil level:	<b>OK</b>		
Registration Certificate Car (BE):	<b>Yes</b>		

Options	
Radio CD	Central consol F
Windows electric F	Luggage cover
Windows electric R	
Steering wheel multifunctional	
Radio multimedia	
Type of headlighting	<b>Headlighting Halogen</b>
Type of GPS	<b>GPS big screen color</b>
Type of Lining	<b>Lining fabrics</b>
Type of climate control	<b>Manual climate control</b>

Limited Technical Inspection			
Airco functioning	<b>OK</b>	Battery functioning	<b>Yes</b>
Tires wear profile	<b>OK</b>	Power steering	<b>Yes</b>
Idle position	<b>OK</b>	Sound engine	<b>OK</b>
Engine startingtime	<b>OK</b>	Clutch test	<b>OK</b>
Exhaust gass	<b>OK</b>	Wiper fluid level	<b>OK</b>
Handbrake	<b>OK</b>	Transmission	<b>OK</b>
		Lighting	<b>OK</b>
		Wiperblades	<b>OK</b>

Degree of wear				
	<b>195/65/15/95 V Steel</b>			
Summer tyres:	Fr.L.	<b>Michelin: 4 mm</b>	Fr.R.	<b>Michelin: 4 mm</b>
	Re.L.	<b>Michelin: 6 mm</b>	Re.R.	<b>Michelin: 6 mm</b>

Assistance equipment			
Repair kit	<b>Yes</b>	Compressor	<b>Yes</b>
Total cost ex VAT			<b>383,08</b>
Bonnet, Chemical polution, LI - Repair and paint (complete)			<b>290,08</b>



Wheel cover F L, Scratch(es), E - Replace	<b>30,00</b>
---	--------------



Door F L, Bump(s), PDR - Knock out without painting 63,00



Wing F R, Scratch(es), Acceptable 0,00

No pictures to display