


AUDI A6: 1GQZ810

| | | | |
|------------------------------------|--------------------------|--------------|-----------------------|
| Vinnumber: | WAUZZZ4G4EN135403 | Versionname: | A6 AVANT 136PK |
| First Registrationdate: | 4/04/2014 | Fiscalpower: | |
| Expertise Mileage: | 115367 | Power Kw: | 100 |
| Bodytype: | Break | Body color: | Dark Grey |
| Gearbox: | MAN 6 VIT | Paint type: | Metalic |
| Transmission: | Front | Rims summer: | Aluminium |
| Fueltype: | Diesel | Oil level: | OK |
| Battery functioning: | Yes | Parking lot: | 2623 |
| Number of doors: | 5 | | |
| Number of seats: | 5 | | |
| Number head rests: | 5 | | |
| Rims summer: | Aluminium | | |
| Category: | Passenger Car | | |
| Oil level: | OK | | |
| Registration Certificate Car (BE): | Yes | | |

Options

| | | | |
|--------------------------------|------------------------------|-----------------------|----------------------|
| Radio CD | | Central consol F | |
| GPS storage | HD | Luggage cover | |
| GPS storage | | Front parking sensors | |
| Windows electric F | | Rear parking sensors | |
| Windows electric R | | Type of Tow bar | Tow bar fixed |
| Cruise Control | | | |
| Steering wheel multifunctional | | | |
| Seats F heated | | | |
| Radio multimedia | | | |
| Type of headlighting | Headlighting Xenon | | |
| Type of GPS | GPS big screen color | | |
| Type of Lining | Lining leather | | |
| Type of climate control | Autom climate control | | |

Limited Technical Inspection

| | | | |
|---------------------|-----------|---------------------|------------|
| Airco functioning | OK | Battery functioning | Yes |
| Tires wear profile | OK | Power steering | Yes |
| Idle position | OK | Sound engine | OK |
| Engine startingtime | OK | Clutch test | OK |
| Exhaust gass | OK | Wiper fluid level | OK |
| Handbrake | OK | Transmission | OK |
| | | Lighting | OK |
| | | Wiperblades | OK |

Degree of wear

| | | | | |
|---------------|-----------------------------------|-----------------------|-------|-----------------------|
| | 225/60/16/102 H LightMetal | | | |
| Winter tyres: | Fr.L. | Michelin: 5 mm | Fr.R. | Michelin: 5 mm |
| | Re.L. | Michelin: 5 mm | Re.R. | Michelin: 5 mm |

Assistance equipment

| | | | |
|-----------------------|------------|------|------------|
| Emergency spare wheel | Yes | Jack | Yes |
|-----------------------|------------|------|------------|

| | |
|-------------------|---------|
| Total cost ex VAT | 3126,15 |
|-------------------|---------|

| | |
|-------------------------------------|------|
| Windscreen, Scratch(es), Acceptable | 0,00 |
|-------------------------------------|------|

No pictures to display

| | |
|-----------------------------|------|
| Interior, Dirty, Acceptable | 0,00 |
|-----------------------------|------|



Bonnet, Chemical polution, LI - Repair and paint (complete)

348,09



Wing F R, Chemical polution, LI - Repair and paint (complete) 264,21



Tailgate, Scratch(es), Acceptable 0,00

No pictures to display

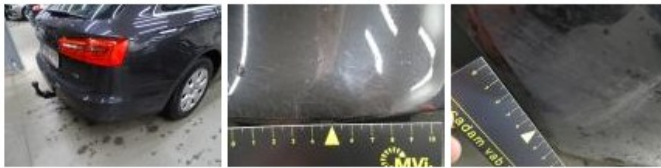
Door R L, Stain, Acceptable 0,00



Alloy rim R L, Scratch(es), LI - Repair and paint (complete) 95,00



Bumper corner R R, Scratch(es), It - Spot repair 115,56



Alloy rim R R, Scratch(es), E - Replace 277,44



Front bumper, Scratch(es), LI - Repair and paint (complete) 254,16



Alloy rim F R, Scratch(es), LI - Repair and paint (complete) 95,00





Alloy rim F L, Scratch(es), LI - Repair and paint (complete) 95,00



Wing R L, Scratch(es), LI - Repair and paint (complete) 369,84



Wing F L, Scratch(es), LI - Repair and paint (complete) 264,21



Wing F L, Scratch(es), Acceptable 0,00

No pictures to display

Wing R R, Bump(s) and scratch(es), LI - Repair and paint (complete) 369,84



Roof, Chemical polution, LI - Repair and paint (complete) 577,80

