



**SKODA Superb: 1FKW142**

Vinnnumber:	<b>TMBJJ73T9E9014286</b>	Versionname:	<b>SUPERB COMBI GreenLine Ambition 105PK</b>
First Registrationdate:	<b>31/07/2013</b>	Fiscalpower:	
Expertise Mileage:	<b>198869</b>	Power Kw:	<b>77</b>
Bodytype:	<b>Break</b>	Body color:	<b>Dark Brown</b>
Gearbox:	<b>MAN 5 VIT</b>	Paint type:	<b>Metalic</b>
Transmission:	<b>Front</b>	Rims summer:	<b>Aluminium</b>
Fueltype:	<b>Diesel</b>	Oil level:	<b>OK</b>
Battery functioning:	<b>Yes</b>	Parking lot:	<b>1306</b>
Number of doors:	<b>5</b>		
Number of seats:	<b>5</b>		
Number head rests:	<b>5</b>		
Rims summer:	<b>Aluminium</b>		
Category:	<b>Passenger Car</b>		
Oil level:	<b>OK</b>		

**Options**

Radio CD	Seats electric F L
Windows electric F	Central consol F
Windows electric R	Luggage cover
Cruise Control	Front parking sensors
Steering wheel multifunctional	Rear parking sensors
Radio multimedia	
Type of headlighting	<b>Headlighting Halogen</b>
Type of GPS	<b>GPS big screen color</b>
Type of Lining	<b>Lining fabrics</b>
Type of climate control	<b>Autom climate control</b>

**Limited Technical Inspection**

Airco functioning	<b>OK</b>	Battery functioning	<b>Yes</b>
Tires wear profile	<b>OK</b>	Power steering	<b>Yes</b>
Idle position	<b>OK</b>	Sound engine	<b>OK</b>
Engine startingtime	<b>OK</b>	Clutch test	<b>OK</b>
Exhaust gass	<b>OK</b>	Wiper fluid level	<b>OK</b>
Handbrake	<b>OK</b>	Transmission	<b>OK</b>
		Lighting	<b>OK</b>
		Wiperblades	<b>OK</b>

**Degree of wear**

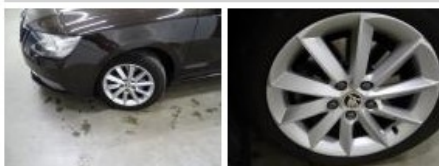
	<b>205/55/16/91 V LightMetal</b>			
Summer tyres:	Fr.L.	<b>Pirelli: 3 mm</b>	Fr.R.	<b>Pirelli: 3 mm</b>
	Re.L.	<b>Pirelli: 4 mm</b>	Re.R.	<b>Pirelli: 4 mm</b>

**Assistance equipment**

Repair kit	<b>Yes</b>	Compressor	<b>Yes</b>
------------	------------	------------	------------

Total cost ex VAT	<b>530,00</b>
-------------------	---------------

Alloy rim F L, Scratch(es), LI - Repair and paint (complete)	<b>95,00</b>
--------------------------------------------------------------	--------------



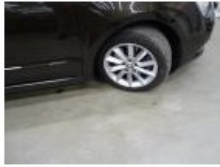
Alloy rim R L, Scratch(es), LI - Repair and paint (complete)	<b>95,00</b>
--------------------------------------------------------------	--------------



Alloy rim R R, Scratch(es), LI - Repair and paint (complete)	<b>95,00</b>
--------------------------------------------------------------	--------------



Alloy rim F R, Scratch(es), LI - Repair and paint (complete) 95,00



Roof, Hail damage, PDR - Hail 150,00

