



| | |
|-----------------------------------|---------------------------------------|
| BMW 1: 1GK163 | |
| Vinnumber: | WBA1C91010J522187 |
| First Registrationdate: | 3/03/2014 |
| Expertise Mileage: | 118711 |
| Bodytype: | Hatchback |
| Gearbox: | MAN 6 VIT |
| Transmission: | Back |
| Fueltype: | Diesel |
| Battery functioning | Yes |
| Number of doors | 5 |
| Number of seats | 5 |
| Number head rests | 5 |
| Rims summer | Aluminium |
| Category | Passenger Car |
| Oil level | OK |
| Registration Certificate Car (BE) | Yes |
| Versionname: | 1 HATCH 116d Eff.Dyn.Ed. 116PK |
| Fiscalpower: | 116PK |
| Power Kw: | 85 |
| Body color | Black |
| Paint type | Metalic |
| Rims summer | Aluminium |
| Oil level | OK |
| Parking lot | 4714 |

| | |
|--------------------------------|------------------------------|
| Options | |
| Radio CD | Central consol F |
| Windows electric F | Luggage cover |
| Windows electric R | Front parking sensors |
| Cruise Control | Rear parking sensors |
| Steering wheel multifunctional | |
| Seats F heated | |
| Radio multimedia | |
| Type of headlighting | Headlighting Xenon |
| Type of GPS | GPS big screen color |
| Type of Lining | Lining leather |
| Type of climate control | Autom climate control |

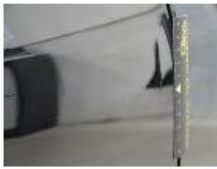
| | | | |
|-------------------------------------|-----------|---------------------|------------|
| Limited Technical Inspection | | | |
| Airco functioning | OK | Battery functioning | Yes |
| Tires wear profile | OK | Power steering | Yes |
| Idle position | OK | Sound engine | OK |
| Engine startingtime | OK | Clutch test | OK |
| Exhaust gass | OK | Wiper fluid level | OK |
| Handbrake | OK | Transmission | OK |
| | | Lighting | OK |
| | | Wiperblades | OK |

| | | | | |
|-----------------------|----------------------------------|----------------------|-------|----------------------|
| Degree of wear | | | | |
| | 205/55/16/91 H LightMetal | | | |
| Winter tyres: | Fr.L. | Pirelli: 6 mm | Fr.R. | Pirelli: 6 mm |
| | Re.L. | Pirelli: 5 mm | Re.R. | Pirelli: 5 mm |

| | | | |
|------------------------------------|------------|------------|---------------|
| Assistance equipment | | | |
| Repair kit | Yes | Compressor | Yes |
| Total cost ex VAT | | | 978,23 |
| Wing R L, Bad repair, Paint | | | 0,00 |



| | |
|--|--------------|
| Door R R, Bump(s), PDR - Knock out without painting | 63,00 |
|--|--------------|



| | |
|-----------------------------------|------|
| Wing R R, Scratch(es), Acceptable | 0,00 |
|-----------------------------------|------|

No pictures to display

| | |
|---|--------|
| Bonnet, Chemical polution, LI - Repair and paint (complete) | 290,08 |
|---|--------|



| | |
|---|--------|
| Bumper R, Scratch(es), LI - Repair and paint (complete) | 211,80 |
|---|--------|



| | |
|--|-------|
| Alloy rim F R, Scratch(es), LI - Repair and paint (complete) | 95,00 |
|--|-------|



| | |
|---|--------|
| Door F R, Bump(s), LI - Repair and paint (complete) | 318,35 |
|---|--------|

