



IVECO Daily 40C15: 1CFT107

Vinnnumber:	ZCFC40A5005895653	Versionname:	DAILY PU2C 40C15 146PK
First Registrationdate:	15/11/2011	Fiscalpower:	3500KG
Expertise Mileage:	206029	Power Kw:	107
Bodytype:	Transporter	Body color:	White
Gearbox:	MAN 6 VIT	Paint type:	Metalic
Transmission:		Rims summer:	Steel
Fueltype:	Diesel	Oil level:	OK
Battery functioning:	Yes	Parking lot:	LCV30
Number of doors:	4		
Number of seats:	7		
Number head rests:	7		
Rims summer:	Steel		
Category:	Light Commercial Vehicle		
Oil level:	OK		

Options

Radio CD	Type of Tow bar	Tow bar fixed
Windows electric F		
Cruise Control		
Type of headlighting	Headlighting Halogen	
Type of Lining	Lining fabrics	

Limited Technical Inspection

Airco functioning	OK	Battery functioning	Yes
Tires wear profile	OK	Power steering	Yes
Idle position	OK	Sound engine	OK
Engine startingtime	OK	Clutch test	OK
Exhaust gass	OK	Wiper fluid level	NOT OK
Handbrake	OK	Transmission	OK
		Lighting	OK
		Wiperblades	OK

Degree of wear

	195/75/16/107 R Steel			
Summer tyres:	Fr.L.	Uniroyal: 6 mm	Fr.R.	Uniroyal: 6 mm
	Re.L.	Uniroyal: 6 mm	Re.R.	Uniroyal: 6 mm

Assistance equipment

Spare wheel	No
-------------	-----------

Total cost ex VAT	3444,91
-------------------	---------

Ignition key, Missing, E - Replace	150,00
------------------------------------	--------

No pictures to display

Dashboard, Hole, Smart repair	110,64
-------------------------------	--------



Seat cover F R, Damaged, E - Replace	300,00
--------------------------------------	--------



Floor covering F R, Hole, Smart repair	64,32
--	-------



Bonnet, Bump(s), LI - Repair and paint (complete) 217,56



Spare Tyre, Missing, E - Replace 105,00

No pictures to display

Floor covering F L, Hole, Smart repair 64,32



Floor covering F L, Damaged, Smart repair 64,32



Sill outer L, Rust, LI - Repair and paint (complete) 232,88



Front bumper, Damaged, E - Replace 398,40



Wing F R, Bump(s) and scratch(es), LI - Repair and paint (complete) 165,13



Door panel R L, Damaged, E - Replace 91,50



Door R L, Rust, LI - Repair and paint (complete) 238,76



Console storage compartment, Damaged, Smart repair 110,64



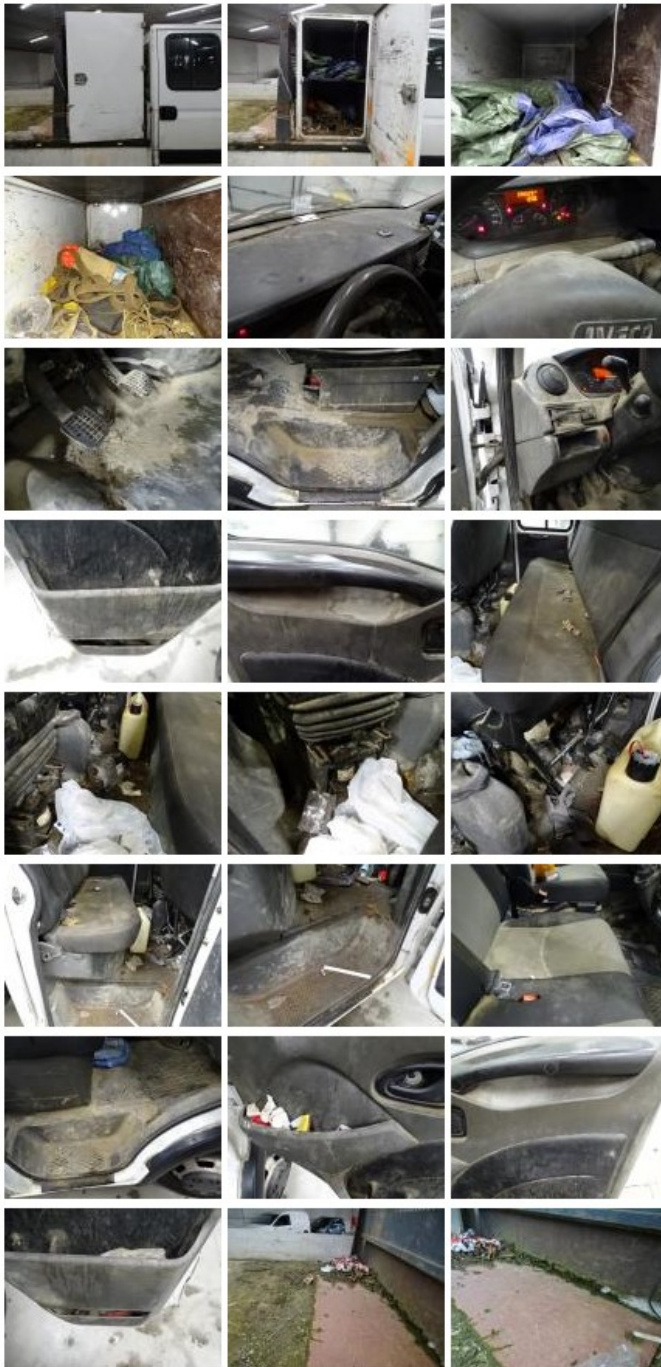
Roof, Not original part, Acceptable 0,00



Wing R R, Scratch(es), It - Spot repair 115,56



Interior, Dirty, Cleaning 150,00



Door panel R R, Damaged, E - Replace 91,50



Sill outer R, Rust, LI - Repair and paint (complete)

232,88



Certificate Of Conformity, Missing, E - Replace

150,00

No pictures to display

Door moulding Lower F L, Missing, E - Replace

91,50



Seat cover F L, Damaged, E - Replace

300,00

