



<b>VOLVO V60: 1EME881</b>			
Vinnumber:	<b>YV1FW84A1D1125186</b>	Versionname:	<b>V60 D2 Kinetic St/St 115PK</b>
First Registrationdate:	<b>21/01/2013</b>	Fiscalpower:	
Expertise Mileage:	<b>55852</b>	Power Kw:	<b>84</b>
Bodytype:	<b>Break</b>	Body color:	<b>Black</b>
Gearbox:	<b>MAN 6 VIT</b>	Paint type:	<b>Metalic</b>
Transmission:	<b>Front</b>	Rims summer:	<b>Aluminium</b>
Fueltype:	<b>Diesel</b>	Oil level:	<b>OK</b>
Battery functioning:	<b>Yes</b>	Parking lot:	<b>1224</b>
Number of doors:	<b>5</b>		
Number of seats:	<b>5</b>		
Number head rests:	<b>5</b>		
Rims summer:	<b>Aluminium</b>		
Category:	<b>Passenger Car</b>		
Oil level:	<b>OK</b>		

<b>Options</b>	
Radio CD	Central consol F
Windows electric F	Luggage cover
Windows electric R	Front parking sensors
Cruise Control	Rear parking sensors
Steering wheel multifunctional	
Radio multimedia	
Type of headlighting:	<b>Headlighting Halogen</b>
Type of GPS:	<b>GPS big screen color</b>
Type of Lining:	<b>Lining leather</b>
Type of climate control:	<b>Autom climate control</b>

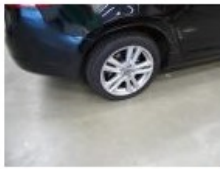
<b>Limited Technical Inspection</b>			
Airco functioning	<b>OK</b>	Battery functioning	<b>Yes</b>
Tires wear profile	<b>OK</b>	Power steering	<b>Yes</b>
Idle position	<b>OK</b>	Sound engine	<b>OK</b>
Engine startingtime	<b>OK</b>	Clutch test	<b>OK</b>
Exhaust gass	<b>OK</b>	Wiper fluid level	<b>OK</b>
Handbrake	<b>OK</b>	Transmission	<b>OK</b>
		Lighting	<b>OK</b>
		Wiperblades	<b>OK</b>

<b>Degree of wear</b>				
	<b>235/45/17/97 V LightMetal</b>			
Winter tyres:	Fr.L.	<b>Fulda: 4 mm</b>	Fr.R.	<b>Fulda: 4 mm</b>
	Re.L.	<b>Fulda: 5 mm</b>	Re.R.	<b>Fulda: 5 mm</b>

<b>Assistance equipment</b>			
Repair kit	<b>Yes</b>	Compressor	<b>Yes</b>
<b>Total cost ex VAT</b>			<b>2087,42</b>
<b>Bonnet, Chemical polution, LI - Repair and paint (complete)</b>			<b>290,08</b>

		<b>Alloy rim R L, Scratch(es), LI - Repair and paint (complete)</b>	<b>95,00</b>
--	--	---	--------------

		<b>Alloy rim R R, Scratch(es), LI - Repair and paint (complete)</b>	<b>95,00</b>
--	--	---	--------------



Alloy rim F L, Scratch(es), LI - Repair and paint (complete) 95,00



Door R L, Scratch(es), LI - Repair and paint (complete) 318,35



Ignition key, Missing, E - Replace 150,00

No pictures to display

Bumper R, Scratch(es), Smart repair 110,64



Bumper R, Scratch(es), LI - Repair and paint (complete) 211,80



Door R R, Scratch(es), LI - Repair and paint (complete) 318,35



Wing R R, Scratch(es), LI - Repair and paint (complete) 308,20



Alloy rim F R, Scratch(es), LI - Repair and paint (complete) 95,00

