


FORD S Max: 1EWM261

Vinnnumber:	WF0SXXGBWSDJ85180	Versionname:	S-MAX Titanium DPF
First Registrationdate:	8/04/2013	Fiscalpower:	136PK
Expertise Mileage:	139135	Power Kw:	100
Bodytype:		Body color:	Blue
Gearbox:	MAN 6 VIT	Paint type:	Metalic
Transmission:	Front	Rims summer:	Aluminium
Fueltype:	Diesel	Oil level:	OK
Battery functioning:	Yes	Parking lot:	3715
Number of doors:	5		
Number of seats:	5		
Number head rests:	5		
Rims summer:	Aluminium		
Category:	Passenger Car		
Oil level:	OK		

Options

Radio CD		Panoramic roof
GPS storage		Central consol F
GPS storage	HD	Luggage cover
Windows electric F		Front parking sensors
Windows electric R		Rear parking sensors
Cruise Control		
Steering wheel multifunctional		
Type of headlighting	Headlighting Halogen	
Type of GPS	GPS big screen color	
Type of Lining	Lining leather	
Type of climate control	Autom climate control	

Limited Technical Inspection

Airco functioning	OK	Battery functioning	Yes
Tires wear profile	OK	Power steering	Yes
Idle position	OK	Sound engine	OK
Engine startingtime	OK	Clutch test	OK
Exhaust gass	OK	Wiper fluid level	OK
Handbrake	OK	Transmission	OK
		Lighting	OK
		Wiperblades	OK

Degree of wear

	225/50/17/98 Y LightMetal			
Summer tyres:	Fr.L.	Uniroyal: 6 mm	Fr.R.	Uniroyal: 6 mm
	Re.L.	Uniroyal: 8 mm	Re.R.	Uniroyal: 8 mm

Assistance equipment

Total cost ex VAT	440,00
Door R R, Scratch(es), Acceptable	0,00
<i>No pictures to display</i>	
Door F R, Scratch(es), Acceptable	0,00
<i>No pictures to display</i>	
Sill outer R, Scratch(es), Acceptable	0,00
<i>No pictures to display</i>	
Door R L, Scratch(es), Acceptable	0,00
<i>No pictures to display</i>	
Steering wheel, Not functioning (well), E - Replace	75,00



Rear window, Scratch(es), Acceptable 0,00

No pictures to display

Ignition key, Missing, E - Replace 150,00



Engine protective plate, Hole, E - Replace 25,00



Door panel R R, Strained , P - Check 0,00



Front bumper, Scratch(es), Acceptable 0,00

No pictures to display

Air vent mid-dashboard, Not functioning (well), P - Check 0,00



Sunroof cover, Not functioning (well), P - Check 0,00



Bumper R, Scratch(es), Acceptable 0,00

No pictures to display

Wing R R, Bump(s), Acceptable 0,00

No pictures to display

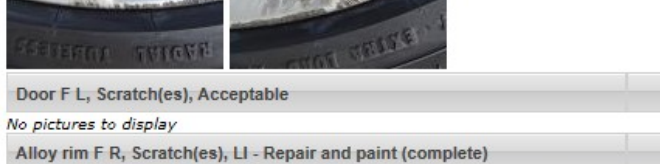
Alloy rim F L, Scratch(es), LI - Repair and paint (complete) 95,00



Door F L, Scratch(es), Acceptable 0,00

No pictures to display

Alloy rim F R, Scratch(es), LI - Repair and paint (complete) 95,00



Bonnet, Scratch(es), Acceptable 0,00

No pictures to display

Bonnet, Scratch(es), Acceptable 0,00



Bonnet, Scratch(es), Acceptable 0,00

No pictures to display

Bonnet, Scratch(es), Acceptable 0,00

No pictures to display