



**AUDI A1: 1ESU937**

Vinnnumber:	<b>WAUZZZ8X8DB089794</b>	Versionname:	<b>A1 5B Attraction 90PK</b>
First Registrationdate:	<b>12/03/2013</b>	Fiscalpower:	
Expertise Mileage:	<b>138906</b>	Power Kw:	<b>66</b>
Bodytype:	<b>Hatchback</b>	Body color:	<b>Brown</b>
Gearbox:	<b>MAN 5 VIT</b>	Paint type:	<b>Metalic</b>
Transmission:	<b>Front</b>	Rims summer:	<b>Aluminium</b>
Fueltype:	<b>Diesel</b>	Oil level:	<b>OK</b>
Battery functioning:	<b>Yes</b>	Parking lot:	<b>3201</b>
Number of doors:	<b>5</b>		
Number of seats:	<b>5</b>		
Number head rests:	<b>5</b>		
Rims summer:	<b>Aluminium</b>		
Category:	<b>Passenger Car</b>		
Oil level:	<b>OK</b>		
Registration Certificate Car (BE):	<b>Yes</b>		

**Options**

Radio CD		Luggage cover	
GPS storage	<b>SD</b>	Rear parking sensors	
GPS storage			
Windows electric F			
Windows electric R			
Steering wheel multifunctional			
Radio multimedia			
Type of headlighting	<b>Headlighting Halogen</b>		
Type of GPS	<b>GPS big screen color</b>		
Type of Lining	<b>Lining fabrics</b>		
Type of climate control	<b>Autom climate control</b>		

**Limited Technical Inspection**

Airco functioning	<b>OK</b>	Battery functioning	<b>Yes</b>
Tires wear profile	<b>OK</b>	Power steering	<b>Yes</b>
Idle position	<b>OK</b>	Sound engine	<b>OK</b>
Engine startingtime	<b>OK</b>	Clutch test	<b>OK</b>
Exhaust gass	<b>OK</b>	Wiper fluid level	<b>NOT OK</b>
Handbrake	<b>OK</b>	Transmission	<b>OK</b>
		Lighting	<b>OK</b>
		Wiperblades	<b>OK</b>

**Degree of wear**

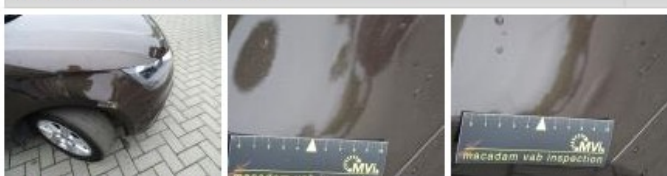
<b>205/55/15/88 V LightMetal</b>				
Summer tyres:	Fr.L.	<b>Continental: 3 mm</b>	Fr.R.	<b>Continental: 3 mm</b>
	Re.L.	<b>Continental: 3 mm</b>	Re.R.	<b>Continental: 3 mm</b>

**Assistance equipment**

Repair kit	<b>Yes</b>	Compressor	<b>Yes</b>
------------	------------	------------	------------

Total cost ex VAT	<b>1979,88</b>
-------------------	----------------

Wing F R, Repaired, Acceptable	<b>0,00</b>
--------------------------------	-------------



Alloy rim F L, Scratch(es), Acceptable	<b>0,00</b>
--	-------------

No pictures to display

Front bumper, Scratch(es), LI - Repair and paint (complete)	<b>169,44</b>
---	---------------



Centre console, Damaged, E - Replace	824,00
--------------------------------------	--------



Door R R, Scratch(es), LI - Repair and paint (complete)	254,68
---	--------



Roof, Chemical polution, LI - Repair and paint (complete)	385,20
---	--------



Interior, Stain, Cleaning	100,00
---------------------------	--------



Wing R L, Scratch(es), LI - Repair and paint (complete)	246,56
---	--------



Bumper R, Scratch(es), Acceptable	0,00
-----------------------------------	------

*No pictures to display*

Windscreen, Scratch(es), Acceptable	0,00
-------------------------------------	------

*No pictures to display*

Door F L, Scratch(es), Acceptable	0,00
-----------------------------------	------

*No pictures to display*