


OPEL Astra: 1CDU130

| | | | |
|-------------------------|--------------------------|--------------|---|
| Vinnnumber: | WOLPD8EAXC8015953 | Versionname: | ASTRA BRE ecoFLEX Enjoy FAP 95PK |
| First Registrationdate: | 27/10/2011 | Fiscalpower: | |
| Expertise Mileage: | 73582 | Power Kw: | 70 |
| Bodytype: | Break | Body color: | Light Grey |
| Gearbox: | MAN 5 VIT | Paint type: | Metalic |
| Transmission: | | Rims summer: | Steel |
| Fueltype: | Diesel | Oil level: | OK |
| Battery functioning: | Yes | Parking lot: | 1509 |
| Number of doors: | 5 | | |
| Number of seats: | 5 | | |
| Number head rests: | 4 | | |
| Rims summer: | Steel | | |
| Category: | Passenger Car | | |
| Oil level: | OK | | |

Options

| | | |
|--------------------------------|-------------------------------|----------------------|
| Radio CD | Luggage cover | |
| Windows electric F | Rear parking sensors | |
| Cruise Control | Type of Tow bar | Tow bar fixed |
| Steering wheel multifunctional | | |
| Radio multimedia | | |
| Type of headlighting | Headlighting Halogen | |
| Type of Lining | Lining fabrics | |
| Type of climate control | Manual climate control | |

Limited Technical Inspection

| | | | |
|---------------------|-----------|---------------------|------------|
| Airco functioning | OK | Battery functioning | Yes |
| Tires wear profile | OK | Power steering | Yes |
| Idle position | OK | Sound engine | OK |
| Engine startingtime | OK | Clutch test | OK |
| Exhaust gass | OK | Wiper fluid level | OK |
| Handbrake | OK | Transmission | OK |
| | | Lighting | OK |
| | | Wiperblades | OK |

Degree of wear

| | | | | |
|---------------|-----------------------------|------------------------|-------|------------------------|
| | 205/60/16/92 V Steel | | | |
| Winter tyres: | Fr.L. | Firestone: 5 mm | Fr.R. | Firestone: 5 mm |
| | Re.L. | Goodyear: 4 mm | Re.R. | Goodyear: 4 mm |

Assistance equipment

| | |
|-----------------------|------------|
| Emergency spare wheel | Yes |
|-----------------------|------------|

| | |
|---|---------|
| Total cost ex VAT | 1475,89 |
| Wing F L, Scratch(es), LI - Repair and paint (complete) | 220,18 |

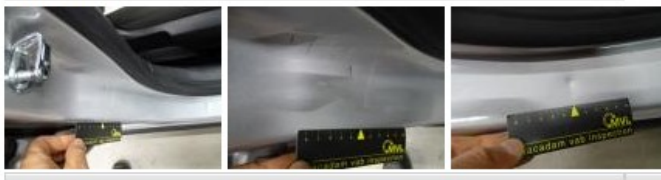

Wheel cover R R, Scratch(es), E - Replace
30,00



Wheel cover F R, Scratch(es), E - Replace 30,00



Rocker panel inner F R, Bump(s) and scratch(es), LI - Repair and paint (complete) 115,56



Interior, Dirty, Cleaning 0,00

No pictures to display

Front bumper, Scratch(es), LI - Repair and paint (complete) 211,80



Wing R R, Scratch(es), LI - Repair and paint (complete) 308,20



Rocker panel inner R R, Scratch(es), Acceptable 0,00

No pictures to display

Bodywork, Not original part, Acceptable 0,00

No pictures to display

Bumper R, Bump(s) and scratch(es), LI - Repair and paint (complete) 211,80



Wheel cover F L, Scratch(es), E - Replace 30,00





| | |
|---|--------|
| Door R L, Scratch(es), Acceptable | 0,00 |
| <i>No pictures to display</i> | |
| Door F R, Scratch(es), LI - Repair and paint (complete) | 318,35 |

