



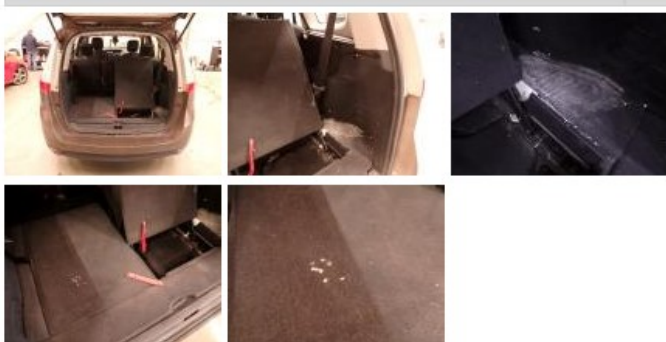
RENAULT Grand Scenic: 1FWL327			
Vinnnumber:	VF1JZ14P649760853	Versionname:	GRAND SCENIC Energy Life 7pl.110PK
First Registrationdate:	19/11/2013	Fiscalpower:	
Expertise Mileage:	119666	Power Kw:	81
Bodytype:	MPV	Body color:	Brown
Gearbox:	MAN 6 VIT	Paint type:	Metalic
Transmission:	Front	Rims summer:	Steel
Fueltype:	Diesel	Oil level:	OK
Maintenance:	OK	Parking lot:	4715
Battery functioning:	Yes		
Number of doors:	5		
Number of seats:	7		
Number head rests:	7		
Rims summer:	Steel		
Category:	Passenger Car		
Oil level:	OK		
Registration Certificate Car (BE):	Yes		

Options	
Radio CD	Central consol F
GPS storage	SD Luggage cover
GPS storage	Front parking sensors
Windows electric F	Rear parking sensors
Windows electric R	
Cruise Control	
Steering wheel multifunctional	
Type of headlighting	Headlighting Halogen
Type of GPS	GPS big screen color
Type of Lining	Lining fabrics
Type of climate control	Autom climate control

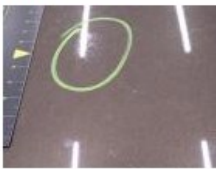
Limited Technical Inspection			
Airco functioning	OK	Battery functioning	Yes
Tires wear profile	OK	Power steering	Yes
Idle position	OK	Sound engine	OK
Engine startingtime	OK	Clutch test	OK
Exhaust gass	OK	Wiper fluid level	OK
Handbrake	OK	Transmission	OK
		Lighting	OK
		Wiperblades	OK

Degree of wear				
	205/60/16/96 H Steel			
Winter tyres:	Fr.L.	Michelin: 5 mm	Fr.R.	Michelin: 5 mm
	Re.L.	Michelin: 5 mm	Re.R.	Michelin: 5 mm

Assistance equipment	
Total cost ex VAT	769,76
Boot carpet, Damaged, E - Replace	100,00



Bonnet, Chemical polution, LI - Repair and paint (complete)	290,08
---	--------



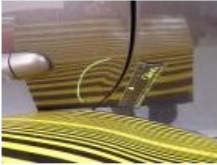
Door F R, Bump(s), Acceptable 0,00

No pictures to display

Wheel cover F R, Scratch(es), Acceptable 0,00

No pictures to display

Door R L, Bump(s), PDR - Knock out without painting 63,00



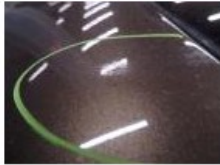
Wheel cover F L, Scratch(es), Acceptable 0,00

No pictures to display

Roof, Bump(s), Acceptable 0,00

No pictures to display

Tailgate, Chemical polution, LI - Repair and paint (complete) 301,68



Seat cover F R, Stain, Cleaning 15,00



Armrest R M, Scratch(es), Acceptable 0,00

