



**OPEL Astra: 1CDU125**

Vinnnumber:	<b>WOLPD8EA5C8013656</b>	Versionname:	<b>ASTRA BRE ecoFLEX Enjoy FAP 95PK</b>
First Registrationdate:	<b>27/10/2011</b>	Fiscalpower:	
Expertise Mileage:	<b>137435</b>	Power Kw:	<b>70</b>
Bodytype:	<b>Break</b>	Body color:	<b>Light Grey</b>
Gearbox:	<b>MAN 5 VIT</b>	Paint type:	<b>Metalic</b>
Transmission:		Rims summer:	<b>Steel</b>
Fueltype:	<b>Diesel</b>	Oil level:	<b>OK</b>
Battery functioning:	<b>Yes</b>	Parking lot:	<b>3104</b>
Number of doors:	<b>5</b>		
Number of seats:	<b>5</b>		
Number head rests:	<b>4</b>		
Rims summer:	<b>Steel</b>		
Category:	<b>Passenger Car</b>		
Oil level:	<b>OK</b>		

**Options**

Radio CD	Luggage cover	
Windows electric F	Rear parking sensors	
Cruise Control	Type of Tow bar	<b>Tow bar fixed</b>
Steering wheel multifunctional		
Radio multimedia		
Type of headlighting	<b>Headlighting Halogen</b>	
Type of Lining	<b>Lining fabrics</b>	
Type of climate control	<b>Manual climate control</b>	

**Limited Technical Inspection**

Airco functioning	<b>OK</b>	Battery functioning	<b>Yes</b>
Tires wear profile	<b>OK</b>	Power steering	<b>Yes</b>
Idle position	<b>OK</b>	Sound engine	<b>OK</b>
Engine startingtime	<b>OK</b>	Clutch test	<b>OK</b>
Exhaust gass	<b>OK</b>	Wiper fluid level	<b>OK</b>
Handbrake	<b>OK</b>	Transmission	<b>OK</b>
		Lighting	<b>OK</b>
		Wiperblades	<b>OK</b>

**Degree of wear**

	<b>205/60/16/92 H Steel</b>			
Summer tyres:	Fr.L.	<b>Goodyear: 7 mm</b>	Fr.R.	<b>Goodyear: 7 mm</b>
	Re.L.	<b>Goodyear: 7 mm</b>	Re.R.	<b>Goodyear: 7 mm</b>

**Assistance equipment**

Emergency spare wheel	<b>Yes</b>	Jack	<b>Yes</b>
-----------------------	------------	------	------------

<b>Total cost ex VAT</b>	<b>1643,98</b>
--------------------------	----------------

<b>Wing R R, Bump(s), Acceptable</b>	<b>0,00</b>
--------------------------------------	-------------

*No pictures to display*

<b>Door R R, Scratch(es), LI - Repair and paint (complete)</b>	<b>318,35</b>
--	---------------



<b>Wheel cover F R, Scratch(es), E - Replace</b>	<b>30,00</b>
--	--------------

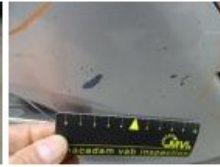




Floor covering F L, Hole, E - Replace 252,00



Front bumper, Scratch(es), LI - Repair and paint (complete) 211,80



Wheel cover F L, Scratch(es), Acceptable 0,00

No pictures to display

Door F R, Scratch(es), LI - Repair and paint (complete) 318,35



Bumper R, Scratch(es), LI - Repair and paint (complete) 211,80



Wing R L, Bump(s), Acceptable 0,00

No pictures to display

Bodywork, Not original part, Acceptable 0,00

No pictures to display

Tailgate, Rust, LI - Repair and paint (complete) 301,68

