



## SKODA OCTAVIA COMBI: 1LNE931

Vinnumber:	<b>TMBLG7NE8G0098355</b>	Versionname:	<b>1.6 CRTDI 81KW 4WD GREENTEC AMBITION</b>
First Registrationdate:	<b>27/10/2015</b>	Fiscalpower:	
Expertise Mileage:	<b>190818</b>	Power Kw:	<b>81</b>
Bodytype:		Body color	<b>Grey</b>
Gearbox:	<b>MAN 6 VIT</b>	Paint type	<b>Metalic</b>
Transmission:	<b>4 Weel</b>	Rims summer	<b>Steel</b>
Fueltype:	<b>Diesel</b>	Oil level	<b>OK</b>
Maintenance	<b>OK</b>	Parking lot	<b>3422</b>
Maintenance	<b>DANS 13600 KM 274 J</b>		
Battery functioning	<b>Yes</b>		
Number of doors	<b>5</b>		
Number of seats	<b>5</b>		
Number head rests	<b>5</b>		
Rims summer	<b>Steel</b>		
Category	<b>Passenger Car</b>		
Oil level	<b>OK</b>		
Registration Certificate Car (BE)	<b>Yes</b>		

## Options

Radio CD	Central consol F
GPS storage	Luggage cover
GPS storage	<b>SD</b> Rear parking sensors
Windows electric F	
Windows electric R	
Cruise Control	
Steering wheel multifunctional	
Radio multimedia	
Type of headlighting	<b>Headlighting Halogen</b>
Type of GPS	<b>GPS big screen color</b>
Type of Lining	<b>Lining fabrics</b>
Type of climate control	<b>Autom climate control</b>

## Limited Technical Inspection

Airco functioning	<b>OK</b>	Battery functioning	<b>Yes</b>
Tires wear profile	<b>OK</b>	Power steering	<b>Yes</b>
Idle position	<b>OK</b>	Sound engine	<b>OK</b>
Engine startingtime	<b>OK</b>	Clutch test	<b>OK</b>
Exhaust gass	<b>OK</b>	Wiper fluid level	<b>OK</b>
Handbrake	<b>OK</b>	Transmission	<b>OK</b>
		Lighting	<b>OK</b>
		Wiperblades	<b>OK</b>

## Degree of wear

	<b>205/55/16/91 H Steel</b>			
Winter tyres:	Fr.L.	<b>Pirelli: 5 mm</b>	Fr.R.	<b>Pirelli: 5 mm</b>
	Re.L.	<b>Michelin: 7 mm</b>	Re.R.	<b>Michelin: 7 mm</b>

## Assistance equipment

Spare wheel	<b>Yes</b>	Jack	<b>Yes</b>
Total cost ex VAT			<b>895,53</b>
Tyre R L, Deformed, E - Replace			<b>132,00</b>

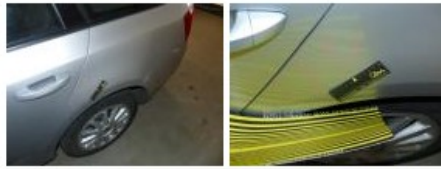


Door F L, Repaired, P - Check	<b>0,00</b>
<i>No pictures to display</i>	
Door R L, Repaired, P - Check	<b>0,00</b>
<i>No pictures to display</i>	

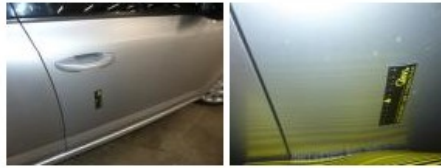
Bonnet, Repaired, P - Check 0,00

No pictures to display

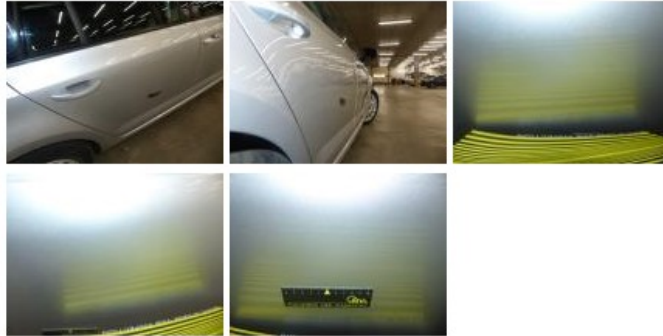
Wing R L, Bump(s), PDR - Knock out without painting 122,40



Door F R, Bad repair, Paint 0,00



Door R R, Bad repair, Paint 0,00



Wing F L, Repaired, Acceptable 0,00

No pictures to display

Wing R R, Bad repair, Paint 0,00



Bumper R, Scratch(es), Acceptable 0,00

No pictures to display

Wing F R, Scratch(es), LI - Repair and paint (complete) 220,18



Wing R L, Repaired, P - Check 0,00

No pictures to display

Bonnet, Stone chip(s), Acceptable 0,00

No pictures to display

Door R L, Bump(s), PDR - Knock out without painting 102,60



Door F R, Scratch(es), LI - Repair and paint (complete) 318,35

