



| VOLVO V40: 1FDC926 | | | |
|-------------------------|--------------------------|--------------|--------------------------|
| Vinnnumber: | YV1MV8481D2061436 | Versionname: | V40 D2 Base 115PK |
| First Registrationdate: | 29/05/2013 | Fiscalpower: | |
| Expertise Mileage: | 165475 | Power Kw: | 84 |
| Bodytype: | Break | Body color: | Black |
| Gearbox: | MAN 6 VIT | Paint type: | Metalic |
| Transmission: | Front | Rims summer: | Aluminium |
| Fueltype: | Diesel | Oil level: | OK |
| Battery functioning: | Yes | Parking lot: | 3630 |
| Number of doors: | 5 | | |
| Number of seats: | 5 | | |
| Number head rests: | 5 | | |
| Rims summer: | Aluminium | | |
| Category: | Passenger Car | | |
| Oil level: | OK | | |

| Options | |
|--------------------------------|---------------------------------------|
| Radio CD | Central consol F |
| Windows electric F | Luggage cover |
| Windows electric R | Front parking sensors |
| Cruise Control | Rear parking sensors |
| Steering wheel multifunctional | |
| Seats F heated | |
| Radio multimedia | |
| Type of headlighting | Headlighting Halogen |
| Type of GPS | GPS big screen color |
| Type of Lining | Lining semi-artificial leather |
| Type of climate control | Autom climate control |

| Limited Technical Inspection | | | |
|------------------------------|-----------|---------------------|------------|
| Airco functioning | OK | Battery functioning | Yes |
| Tires wear profile | OK | Power steering | Yes |
| Idle position | OK | Sound engine | OK |
| Engine startingtime | OK | Clutch test | OK |
| Exhaust gass | OK | Wiper fluid level | OK |
| Handbrake | OK | Transmission | OK |
| | | Lighting | OK |
| | | Wiperblades | OK |

| Degree of wear | | | |
|----------------|----------------------------------|-------|----------------|
| Winter tyres: | 205/55/16/92 H LightMetal | | |
| | Fr.L. | Fr.R. | Michelin: 4 mm |
| | Re.L. | Re.R. | Michelin: 5 mm |

| Assistance equipment | | | |
|-----------------------------|------------|------|------------|
| Emergency spare wheel | Yes | Jack | Yes |
| Total cost ex VAT | | | 1213,20 |
| Wing R R, Bad repair, Paint | | | 0,00 |



| | | | |
|-----------------------------|--|--|------|
| Bumper R, Bad repair, Paint | | | 0,00 |
|-----------------------------|--|--|------|



Door R L, Scratch(es), LI - Repair and paint (complete) 318,35



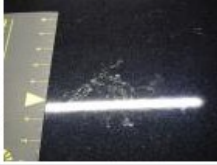
Wing R L, Scratch(es), Acceptable 0,00

No pictures to display

Bonnet, Chemical polution, 67 - Polish 0,00

No pictures to display

Roof, Chemical polution, LI - Repair and paint (complete) 481,50



Alloy rim F R, Scratch(es), LI - Repair and paint (complete) 95,00



Door F L, Scratch(es), LI - Repair and paint (complete) 318,35

