



BMW 1: 1EHU158			
Vinnumber:	WBA1C91090J505802	Versionname:	1 HATCH 116d Eff.Dyn.Ed. 116PK
First Registrationdate:	6/12/2012	Fiscalpower:	
Expertise Mileage:	106675	Power Kw:	85
Bodytype:		Body color	Black
Gearbox:	MAN 6 VIT	Paint type	Metalic
Transmission:		Rims summer	Aluminium
Fueltype:	Diesel	Oil level	OK
Battery functioning	Yes	Parking lot	1711
Number of doors	5		
Number of seats	5		
Number head rests	5		
Rims summer	Aluminium		
Category	Passenger Car		
Oil level	OK		

Options	
Radio CD	Luggage cover
Windows electric F	Rear parking sensors
Windows electric R	
Cruise Control	
Steering wheel multifunctional	
Radio multimedia	
Type of headlighting	Headlighting Halogen
Type of GPS	GPS big screen color
Type of Lining	Lining fabrics
Type of climate control	Manual climate control

Limited Technical Inspection			
Airco functioning	OK	Battery functioning	Yes
Tires wear profile	OK	Power steering	Yes
Idle position	OK	Sound engine	OK
Engine startingtime	OK	Clutch test	OK
Exhaust gass	OK	Wiper fluid level	OK
Handbrake	OK	Transmission	OK
		Lighting	OK
		Wiperblades	OK

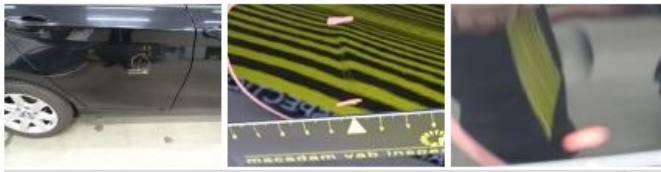
Degree of wear				
Summer tyres:	205/55/16/91 V LightMetal			
	Fr.L.	Michelin: 5 mm	Fr.R.	Michelin: 5 mm
	Re.L.	Michelin: 5 mm	Re.R.	Michelin: 5 mm

Assistance equipment			
Repair kit	Yes	Compressor	Yes

Total cost ex VAT	283,18
Wing F L, Scratch(es), LI - Repair and paint (complete)	220,18



Alloy rim F R, Scratch(es), Acceptable	0,00
<i>No pictures to display</i>	
Door R R, Bump(s), PDR - Knock out without painting	63,00



Front bumper, Bad repair, Acceptable 0,00



Bumper R, Scratch(es), Acceptable 0,00

No pictures to display

Wing R L, Scratch(es), Acceptable 0,00

No pictures to display