



FORD Galaxy: 1EZB037			
Vinnnumber:	WF0MXXGBWMDU07869	Versionname:	GALAXY Econetic Ghia St&St DPF 115PK
First Registrationdate:	25/04/2013	Fiscalpower:	
Expertise Mileage:	146610	Power Kw:	85
Bodytype:	MPV	Body color:	Dark Grey
Gearbox:	MAN 6 VIT	Paint type:	Metalic
Transmission:	Front	Rims summer:	Aluminium
Fueltype:	Diesel	Oil level:	OK
Battery functioning:	Yes	Parking lot:	1324
Number of doors:	5		
Number of seats:	7		
Number head rests:	7		
Rims summer:	Aluminium		
Category:	Passenger Car		
Oil level:	OK		

Options	
Radio CD	Seats electric F L
Windows electric F	Seats electric F R
Windows electric R	Central consol F
Cruise Control	Luggage cover
Steering wheel multifunctional	Front parking sensors
Radio multimedia	Rear parking sensors
Type of headlighting:	Headlighting Halogen
Type of GPS:	GPS big screen color
Type of Lining:	Lining leather
Type of climate control:	Autom climate control

Limited Technical Inspection			
Airco functioning	OK	Battery functioning	Yes
Tires wear profile	OK	Power steering	Yes
Idle position	OK	Sound engine	OK
Engine startingtime	OK	Clutch test	OK
Exhaust gass	OK	Wiper fluid level	OK
Handbrake	OK	Transmission	OK
		Lighting	OK
		Wiperblades	OK

Degree of wear				
	225/50/17/96 W LightMetal			
Winter tyres:	Fr.L.	Uniroyal: 5 mm	Fr.R.	Uniroyal: 5 mm
	Re.L.	Uniroyal: 6 mm	Re.R.	Uniroyal: 6 mm

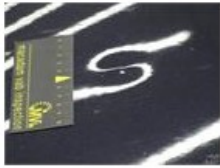
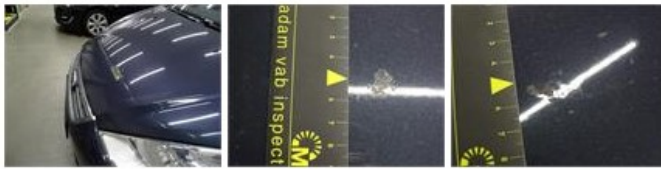
Assistance equipment			
Repair kit	Yes	Compressor	Yes
Total cost ex VAT			1393,56
Bumper R, Scratch(es), LI - Repair and paint (complete)			211,80



Roof, Chemical polution, LI - Repair and paint (complete)	481,50
------------------------------------------------------------------	---------------



Bonnet, Chemical polution, LI - Repair and paint (complete)	290,08
--------------------------------------------------------------------	---------------



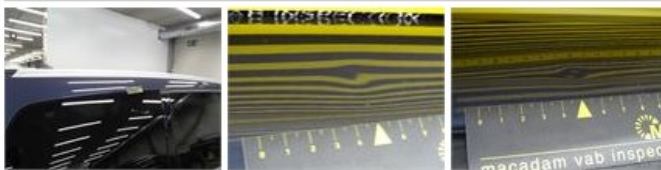
Front bumper, Scratch(es), Acceptable	0,00
<i>No pictures to display</i>	
Alloy rim F R, Scratch(es), LI - Repair and paint (complete)	95,00



Door F L, Scratch(es), Acceptable	0,00
<i>No pictures to display</i>	
Alloy rim F L, Scratch(es), LI - Repair and paint (complete)	95,00



Roof pillar R, Bump(s), LI - Repair and paint (complete)	220,18
----------------------------------------------------------	--------



Door R L, Scratch(es), Acceptable	0,00
<i>No pictures to display</i>	