



<b>CITROEN Berlingo: 617BJ</b>			
Vinnnumber:	<b>VF77D9HSCAJ693334</b>	Versionname:	<b>BERLINGO B/F PLC kort Pro FAP 90PK Spec.</b>
First Registrationdate:	<b>22/07/2010</b>	Fiscalpower:	
Expertise Mileage:	<b>162230</b>	Power Kw:	<b>66</b>
Bodytype:	<b>Transporter</b>	Body color:	<b>Silver</b>
Gearbox:	<b>MAN 5 VIT</b>	Paint type:	<b>Metalic</b>
Transmission:	<b>Front</b>	Rims summer:	<b>Steel</b>
Fueltype:	<b>Diesel</b>	Oil level:	<b>OK</b>
Battery functioning:	<b>Yes</b>	Parking lot:	<b>2118</b>
Number of doors:	<b>5</b>		
Number of seats:	<b>3</b>		
Number head rests:	<b>3</b>		
Rims summer:	<b>Steel</b>		
Category:	<b>Light Commercial Vehicle</b>		
Oil level:	<b>OK</b>		

<b>Options</b>		
Radio CD	Type of Tow bar	<b>Tow bar fixed</b>
Windows electric F		
Cruise Control		
Type of headlighting:	<b>Headlighting Halogen</b>	
Type of Lining:	<b>Lining artificial leather</b>	
Type of climate control:	<b>Manual climate control</b>	

<b>Limited Technical Inspection</b>			
Airco functioning	<b>OK</b>	Battery functioning	<b>Yes</b>
Tires wear profile	<b>OK</b>	Power steering	<b>Yes</b>
Idle position	<b>OK</b>	Sound engine	<b>OK</b>
Engine startingtime	<b>OK</b>	Clutch test	<b>OK</b>
Exhaust gass	<b>OK</b>	Wiper fluid level	<b>OK</b>
Handbrake	<b>OK</b>	Transmission	<b>OK</b>
		Lighting	<b>OK</b>
		Wiperblades	<b>OK</b>

<b>Degree of wear</b>				
	<b>195/65/15/91 H Steel</b>			
Winter tyres:	Fr.L.	<b>Goodyear: 4 mm</b>	Fr.R.	<b>Goodyear: 4 mm</b>
	Re.L.	<b>Goodyear: 4 mm</b>	Re.R.	<b>Goodyear: 4 mm</b>

<b>Assistance equipment</b>			
Spare wheel	<b>Yes</b>	Jack	<b>Yes</b>
Total cost ex VAT			<b>1344,29</b>
Bodywork, Not original part, Acceptable			<b>0,00</b>

*No pictures to display*

Door F L, Bump(s) and scratch(es), LI - Repair and paint (complete)	<b>238,76</b>
---	---------------



Wheel cover R L, Damaged, E - Replace	<b>22,50</b>
---------------------------------------	--------------



Bumper R, Broken, E - Replace 329,40



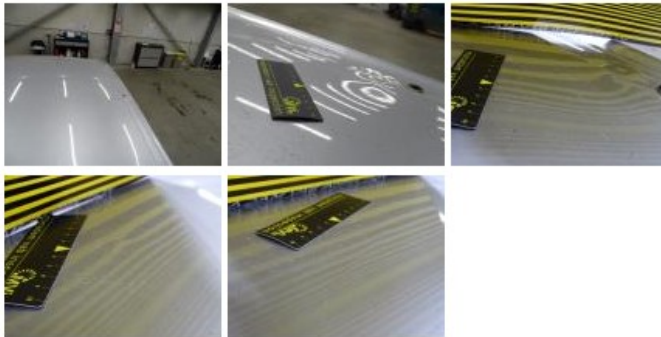
Seat cover F L, Damaged, E - Replace 220,00



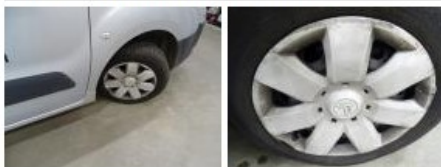
Trunk door R L, Bump(s), Acceptable 0,00

No pictures to display

Roof, Bump(s), LI - Repair and paint (complete) 361,13



Wheel cover F R, Scratch(es), E - Replace 22,50



Ignition key, Missing, E - Replace 150,00

No pictures to display