


**MERCEDES C: 1FKL061**

Vinnumber:	<b>WDD2040001A894102</b>	Versionname:	<b>C BER 180 CDI BlueEFF. S&amp;S 120PK</b>
First Registrationdate:	<b>26/07/2013</b>	Fiscalpower:	
Expertise Mileage:	<b>72654</b>	Power Kw:	<b>88</b>
Bodytype:		Body color:	<b>Black</b>
Gearbox:	<b>MAN 6 VIT</b>	Paint type:	<b>Metalic</b>
Transmission:		Rims summer:	<b>Aluminium</b>
Fueltype:	<b>Diesel</b>	Oil level:	<b>OK</b>
Battery functioning:	<b>Yes</b>	Parking lot:	<b>1332</b>
Number of doors:	<b>4</b>		
Number of seats:	<b>5</b>		
Number head rests:	<b>5</b>		
Rims summer:	<b>Aluminium</b>		
Category:	<b>Passenger Car</b>		
Oil level:	<b>OK</b>		

**Options**

Radio CD	Central consol F
Windows electric F	Front parking sensors
Windows electric R	Rear parking sensors
Cruise Control	
Steering wheel multifunctional	
Radio multimedia	
Type of headlighting	<b>Headlighting Halogen</b>
Type of GPS	<b>GPS big screen color</b>
Type of Lining	<b>Lining fabrics</b>
Type of climate control	<b>Autom climate control</b>

**Limited Technical Inspection**

Airco functioning	<b>OK</b>	Battery functioning	<b>Yes</b>
Tires wear profile	<b>OK</b>	Power steering	<b>Yes</b>
Idle position	<b>OK</b>	Sound engine	<b>OK</b>
Engine startingtime	<b>OK</b>	Clutch test	<b>OK</b>
Exhaust gass	<b>OK</b>	Wiper fluid level	<b>OK</b>
Handbrake	<b>OK</b>	Transmission	<b>OK</b>
		Lighting	<b>OK</b>
		Wiperblades	<b>OK</b>

**Degree of wear**

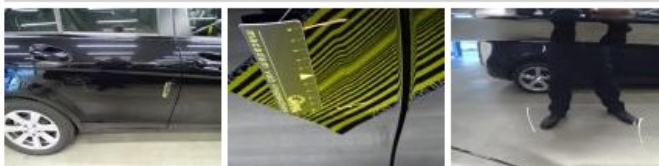
	<b>195/60/16/89 V LightMetal</b>			
Summer tyres:	Fr.L.	<b>Michelin: 5 mm</b>	Fr.R.	<b>Michelin: 5 mm</b>
	Re.L.	<b>Michelin: 3 mm</b>	Re.R.	<b>Michelin: 3 mm</b>

**Assistance equipment**

Emergency spare wheel	<b>Yes</b>	Jack	<b>Yes</b>
-----------------------	------------	------	------------

Total cost ex VAT	1976,93
-------------------	---------

Door R R, Bump(s) and scratch(es), LI - Repair and paint (complete)	318,35
---	--------



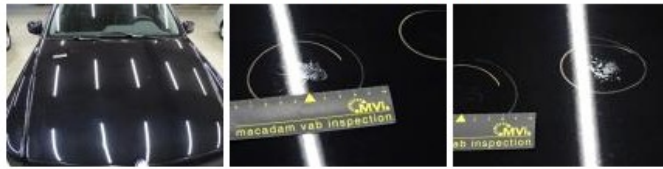
Roof pillar L, Scratch(es), Acceptable	0,00
--	------

*No pictures to display*

Front bumper, Scratch(es), LI - Repair and paint (complete)	211,80
---	--------



Bonnet, Chemical polution, LI - Repair and paint (complete) 290,08



Bumper R, Scratch(es), LI - Repair and paint (complete) 211,80



Door R L, Bump(s) and scratch(es), LI - Repair and paint (complete) 318,35



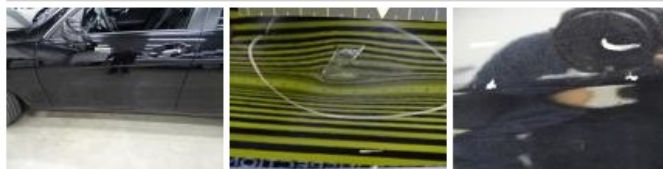
Maintenance book, Missing, E - Replace 0,00

No pictures to display

Wing R L, Bump(s) and scratch(es), LI - Repair and paint (complete) 308,20



Door F L, Bump(s) and scratch(es), LI - Repair and paint (complete) 318,35



Wing F R, Scratch(es), Acceptable 0,00

No pictures to display