


FORD S Max: 1EZQ800

| | | | |
|-------------------------|--------------------------|--------------|---------------------------|
| Vinnnumber: | WF0SXXGBWSDP18705 | Versionname: | S-MAX Titanium DPF |
| First Registrationdate: | 30/04/2013 | Fiscalpower: | 136PK |
| Expertise Mileage: | 118256 | Power Kw: | 100 |
| Bodytype: | MPV | Body color: | Grey |
| Gearbox: | MAN 6 VIT | Paint type: | Metalic |
| Transmission: | | Rims summer: | Aluminium |
| Fueltype: | Diesel | Oil level: | OK |
| Battery functioning: | Yes | Parking lot: | 1433 |
| Number of doors: | 5 | | |
| Number of seats: | 7 | | |
| Number head rests: | 7 | | |
| Rims summer: | Aluminium | | |
| Category: | Passenger Car | | |
| Oil level: | OK | | |

Options

| | |
|------------------------------|------------------------------|
| Radio CD | Seats electric F L |
| Windows electric F | Seats electric F R |
| Windows electric R | Panoramic roof |
| Cruise Control | Central consol F |
| Steering wheel multifunction | Front parking sensors |
| Seats F heated | Rear parking sensors |
| Radio multimedia | |
| Type of headlighting | Headlighting Halogen |
| Type of GPS | GPS big screen color |
| Type of Lining | Lining leather |
| Type of climate control | Autom climate control |

Limited Technical Inspection

| | | | |
|---------------------|-----------|---------------------|---------------|
| Airco functioning | OK | Battery functioning | Yes |
| Tires wear profile | OK | Power steering | Yes |
| Idle position | OK | Sound engine | OK |
| Engine startingtime | OK | Clutch test | OK |
| Exhaust gass | OK | Wiper fluid level | NOT OK |
| Handbrake | OK | Transmission | OK |
| | | Lighting | OK |
| | | Wiperblades | OK |

Degree of wear

| | | | | |
|---------------|----------------------------------|-----------------------|-------|-----------------------|
| | 225/50/17/94 H LightMetal | | | |
| Summer tyres: | Fr.L. | Michelin: 5 mm | Fr.R. | Michelin: 5 mm |
| | Re.L. | Michelin: 3 mm | Re.R. | Michelin: 3 mm |

Assistance equipment

| | | | |
|------------|------------|------------|------------|
| Repair kit | Yes | Compressor | Yes |
|------------|------------|------------|------------|

| | |
|---|------|
| Total cost ex VAT | 0,00 |
| Door F L, Scratch(es), Acceptable | 0,00 |
| <i>No pictures to display</i> | |
| Backrest cover R L, Damaged, Smart repair | 0,00 |



| | |
|--|------|
| Alloy rim F R, Scratch(es), LI - Repair and paint (complete) | 0,00 |
|--|------|



Panoramic roof, Broken, E - Replace 0,00



Alloy rim R R, Scratch(es), Acceptable 0,00

No pictures to display

Backrest cover R R, Damaged, Smart repair 0,00



Alloy rim F L, Scratch(es), LI - Repair and paint (complete) 0,00



Door R L, Scratch(es), LI - Repair and paint (complete) 0,00



Wing R R, Scratch(es), LI - Repair and paint (complete) 0,00



Wing R L, Scratch(es), LI - Repair and paint (complete) 0,00



Front bumper, Stone chip(s), Acceptable 0,00

No pictures to display

Wing F R, Scratch(es), LI - Repair and paint (complete) 0,00

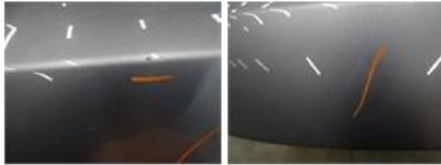




Rear window, Scratch(es), Acceptable 0,00

No pictures to display

Tailgate, Scratch(es), LI - Repair and paint (complete) 0,00



Backrest cover R R, Damaged, Smart repair 0,00



Rocker panel inner R R, Scratch(es), Acceptable 0,00

No pictures to display

Trunk lid covering R, Missing, E - Replace 0,00

