



BMW 1: 1GUH331

Vinnnumber:	WBA1C91040P691536	Versionname:	1 HATCH 116d Eff.Dyn.Ed. 116PK
First Registrationdate:	2/05/2014	Fiscalpower:	
Expertise Mileage:	70900	Power Kw:	85
Bodytype:	Hatchback	Body color:	Dark Blue
Gearbox:	MAN 6 VIT	Paint type:	Metalic
Transmission:	Back	Rims summer:	Aluminium
Fueltype:	Diesel	Oil level:	OK
Battery functioning:	Yes	Parking lot:	3721
Number of doors:	5		
Number of seats:	5		
Number head rests:	5		
Rims summer:	Aluminium		
Category:	Passenger Car		
Oil level:	OK		
Registration Certificate Car (BE):	Yes		

Options

Radio CD	Central consol F
Windows electric F	Luggage cover
Windows electric R	
Cruise Control	
Radio multimedia	
Type of headlighting:	Headlighting Halogen
Type of GPS:	GPS big screen color
Type of Lining:	Lining fabrics
Type of climate control:	Manual climate control

Limited Technical Inspection

Airco functioning	OK	Battery functioning	Yes
Tires wear profile	OK	Power steering	Yes
Idle position	OK	Sound engine	OK
Engine startingtime	OK	Clutch test	OK
Exhaust gass	OK	Wiper fluid level	OK
Handbrake	OK	Transmission	OK
		Lighting	OK
		Wiperblades	OK

Degree of wear

	205/55/16/91 T LightMetal			
Winter tyres:	Fr.L.	Continental: 5 mm	Fr.R.	Continental: 5 mm
	Re.L.	Continental: 6 mm	Re.R.	Continental: 6 mm

Assistance equipment

Repair kit	Yes	Compressor	Yes
------------	------------	------------	------------

Total cost ex VAT	1510,36
-------------------	----------------

Wing F R, Scratch(es), LI - Repair and paint (complete)	220,18
---	---------------

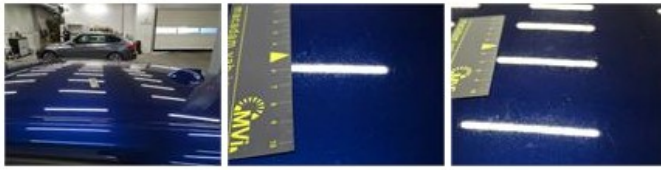


Bumper R, Scratch(es), LI - Repair and paint (complete)	211,80
---	---------------





Roof, Chemical polution, LI - Repair and paint (complete) 481,50



Bonnet, Chemical polution, LI - Repair and paint (complete) 290,08



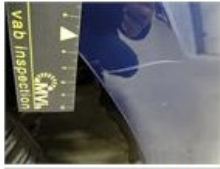
Alloy rim F R, Scratch(es), LI - Repair and paint (complete) 95,00



Door R R, Scratch(es), Acceptable 0,00

No pictures to display

Front bumper, Scratch(es), LI - Repair and paint (complete) 211,80



Windscreen, Stone chip(s), Acceptable 0,00

No pictures to display