



**NISSAN Note: 1GRP457**

Vinnnumber:	<b>SJNTCAE12U1018374</b>	Versionname:	<b>NOTE Connect Edition</b>
First Registrationdate:	<b>9/04/2014</b>	Fiscalpower:	<b>90PK</b>
Expertise Mileage:	<b>99073</b>	Power Kw:	<b>66</b>
Bodytype:	<b>Hatchback</b>	Body color:	<b>Black</b>
Gearbox:	<b>MAN 5 VIT</b>	Paint type:	<b>Metalic</b>
Transmission:	<b>Front</b>	Rims summer:	<b>Aluminium</b>
Fueltype:	<b>Diesel</b>	Oil level:	<b>OK</b>
Battery functioning:	<b>Yes</b>	Parking lot:	<b>2332</b>
Number of doors:	<b>5</b>		
Number of seats:	<b>5</b>		
Number head rests:	<b>5</b>		
Rims summer:	<b>Aluminium</b>		
Category:	<b>Passenger Car</b>		
Oil level:	<b>OK</b>		
Registration Certificate Car (BE):	<b>Yes</b>		

**Options**

Radio CD	Luggage cover
Windows electric F	
Windows electric R	
Cruise Control	
Steering wheel multifunctional	
Radio multimedia	
Type of headlighting:	<b>Headlighting Halogen</b>
Type of GPS:	<b>GPS big screen color</b>
Type of Lining:	<b>Lining fabrics</b>
Type of climate control:	<b>Autom climate control</b>

**Limited Technical Inspection**

Airco functioning	<b>OK</b>	Battery functioning	<b>Yes</b>
Tires wear profile	<b>OK</b>	Power steering	<b>Yes</b>
Idle position	<b>OK</b>	Sound engine	<b>OK</b>
Engine startingtime	<b>OK</b>	Clutch test	<b>OK</b>
Exhaust gass	<b>OK</b>	Wiper fluid level	<b>OK</b>
Handbrake	<b>OK</b>	Transmission	<b>OK</b>
		Lighting	<b>OK</b>
		Wiperblades	<b>OK</b>

**Degree of wear**

	<b>185/65/15/88 H LightMetal</b>			
Summer tyres:	Fr.L.	<b>Michelin: 4 mm</b>	Fr.R.	<b>Michelin: 4 mm</b>
	Re.L.	<b>Michelin: 5 mm</b>	Re.R.	<b>Michelin: 5 mm</b>

**Assistance equipment**

Repair kit	<b>Yes</b>	Compressor	<b>Yes</b>
------------	------------	------------	------------

Total cost ex VAT 1689,76

Bonnet, Bump(s), PDR - Knock out without painting 63,00



Rearview mirror basis L, Damaged, E - Replace 30,00



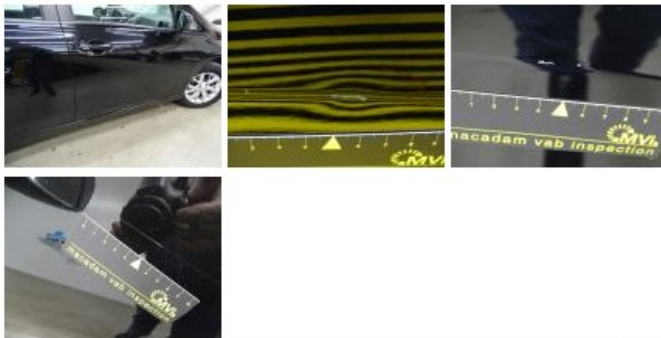
Door F L, Scratch(es), LI - Repair and paint (complete) 254,68



Bumper R, Scratch(es), LI - Repair and paint (complete) 169,44



Door F R, Scratch(es), LI - Repair and paint (complete) 254,68



Wing R R, Bump(s) and scratch(es), Acceptable 0,00

No pictures to display

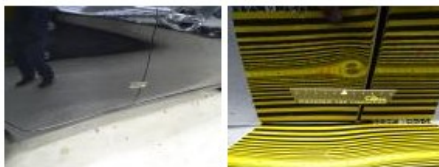
Wing F R, Scratch(es), Acceptable 0,00

No pictures to display

Door R L, Scratch(es), Acceptable 0,00

No pictures to display

Door R R, Bump(s), PDR - Knock out without painting 63,00



Rear window, Scratch(es), E - Replace 320,00



Wing R L, Scratch(es), LI - Repair and paint (complete) 246,56



Sill outer L, Bump(s) and scratch(es), LI - Repair and paint (complete) 248,40



Rear wiper arm. Damaged. E - Replace 40,00

