



<b>VOLVO V40: 1EUJ467</b>			
Vinnnumber:	<b>YV1MV8481D2049173</b>	Versionname:	<b>V40 D2 Base 115PK</b>
First Registrationdate:	<b>22/03/2013</b>	Fiscalpower:	
Expertise Mileage:	<b>126639</b>	Power Kw:	<b>84</b>
Bodytype:		Body color:	<b>Grey</b>
Gearbox:	<b>MAN 6 VIT</b>	Paint type:	<b>Metalic</b>
Transmission:		Rims summer:	<b>Aluminium</b>
Fueltype:	<b>Diesel</b>	Oil level:	<b>OK</b>
Battery functioning:	<b>Yes</b>	Parking lot:	<b>1504</b>
Number of doors:	<b>5</b>		
Number of seats:	<b>5</b>		
Number head rests:	<b>5</b>		
Rims summer:	<b>Aluminium</b>		
Category:	<b>Passenger Car</b>		
Oil level:	<b>OK</b>		

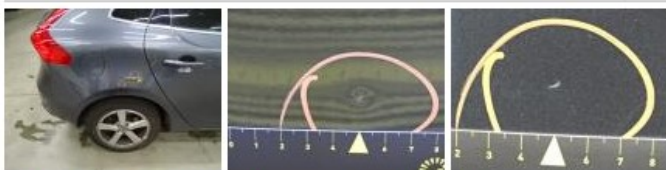
<b>Options</b>	
Radio CD	Central consol F
Windows electric F	Luggage cover
Windows electric R	Rear parking sensors
Cruise Control	
Steering wheel multifunctional	
Radio multimedia	
Type of headlighting:	<b>Headlighting Halogen</b>
Type of GPS:	<b>GPS big screen color</b>
Type of Lining:	<b>Lining fabrics</b>
Type of climate control:	<b>Autom climate control</b>

<b>Limited Technical Inspection</b>			
Airco functioning	<b>OK</b>	Battery functioning	<b>Yes</b>
Tires wear profile	<b>OK</b>	Power steering	<b>Yes</b>
Idle position	<b>OK</b>	Sound engine	<b>OK</b>
Engine startingtime	<b>OK</b>	Clutch test	<b>OK</b>
Exhaust gass	<b>OK</b>	Wiper fluid level	<b>OK</b>
Handbrake	<b>OK</b>	Transmission	<b>OK</b>
		Lighting	<b>OK</b>
		Wiperblades	<b>OK</b>

<b>Degree of wear</b>				
	<b>205/55/16/91 T LightMetal</b>			
Winter tyres:	Fr.L.	<b>Michelin: 5 mm</b>	Fr.R.	<b>Michelin: 5 mm</b>
	Re.L.	<b>Michelin: 7 mm</b>	Re.R.	<b>Michelin: 7 mm</b>

<b>Assistance equipment</b>			
Repair kit	<b>Yes</b>	Compressor	<b>Yes</b>

Total cost ex VAT	<b>403,20</b>
Wing R R, Bump(s) and scratch(es), LI - Repair and paint (complete)	<b>308,20</b>



Alloy rim R R, Scratch(es), LI - Repair and paint (complete)	<b>95,00</b>
--	--------------



