



**VOLKSWAGEN Polo: 1EMM665**

|                         |                          |              |   |
|-------------------------|--------------------------|--------------|---|
| Vinnnumber:             | <b>WVWZZZ6RZDY165166</b> | Versionname: | <b>POLO BER Conf.line BM Techn.DPF 90PK</b> |
| First Registrationdate: | <b>23/01/2013</b>        | Fiscalpower: |   |
| Expertise Mileage:      | <b>104547</b>            | Power Kw:    | <b>66</b>                                   |
| Bodytype:               |                          | Body color:  | <b>Grey</b>                                 |
| Gearbox:                | <b>MAN 5 VIT</b>         | Paint type:  | <b>Metalic</b>                              |
| Transmission:           | <b>Front</b>             | Rims summer: | <b>Steel</b>                                |
| Fueltype:               | <b>Diesel</b>            | Oil level:   | <b>OK</b>                                   |
| Battery functioning:    | <b>Yes</b>               | Parking lot: | <b>3522</b>                                 |
| Number of doors:        | <b>5</b>                 |              |   |
| Number of seats:        | <b>5</b>                 |              |   |
| Number head rests:      | <b>5</b>                 |              |   |
| Rims summer:            | <b>Steel</b>             |              |   |
| Category:               | <b>Passenger Car</b>     |              |   |
| Oil level:              | <b>OK</b>                |              |   |

**Options**

|                         |                              |
|-------------------------|------------------------------|
| Radio CD                | Central consol F             |
| Windows electric F      | Luggage cover                |
| Windows electric R      | Rear parking sensors         |
| Cruise Control          |                              |
| Type of headlighting    | <b>Headlighting Halogen</b>  |
| Type of Lining          | <b>Lining fabrics</b>        |
| Type of climate control | <b>Autom climate control</b> |

**Limited Technical Inspection**

|                     |           |                     |               |
|---------------------|-----------|---------------------|---------------|
| Airco functioning   | <b>OK</b> | Battery functioning | <b>Yes</b>    |
| Tires wear profile  | <b>OK</b> | Power steering      | <b>Yes</b>    |
| Idle position       | <b>OK</b> | Sound engine        | <b>OK</b>     |
| Engine startingtime | <b>OK</b> | Clutch test         | <b>OK</b>     |
| Exhaust gass        | <b>OK</b> | Wiper fluid level   | <b>OK</b>     |
| Handbrake           | <b>OK</b> | Transmission        | <b>NOT OK</b> |
|                     |           | Lighting            | <b>OK</b>     |
|                     |           | Wiperblades         | <b>OK</b>     |

**Degree of wear**

|               |                             |                       |       |                       |
|---------------|-----------------------------|-----------------------|-------|-----------------------|
|               | <b>185/60/15/91 T Steel</b> |                       |       |                       |
| Summer tyres: | Fr.L.                       | <b>Michelin: 5 mm</b> | Fr.R. | <b>Michelin: 5 mm</b> |
|               | Re.L.                       | <b>Kleber: 4 mm</b>   | Re.R. | <b>Kleber: 4 mm</b>   |

**Assistance equipment**

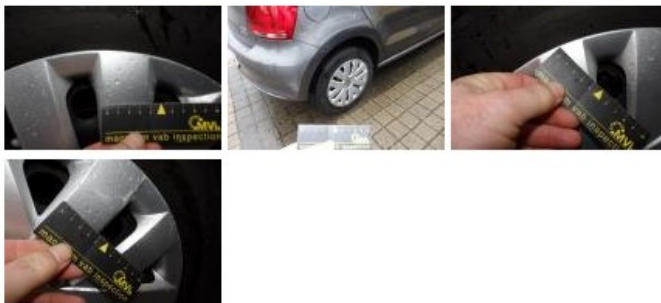
|            |            |            |            |
|------------|------------|------------|------------|
| Repair kit | <b>Yes</b> | Compressor | <b>Yes</b> |
|------------|------------|------------|------------|

|  |        |
|--|--------|
| Total cost ex VAT                                  | 304,12 |
| Bodywork, Not original part, Sticker removal small | 25,00  |



|   |       |
|---|-------|
| Wheel cover R R, Scratch(es), E - Replace | 24,00 |
|---|-------|





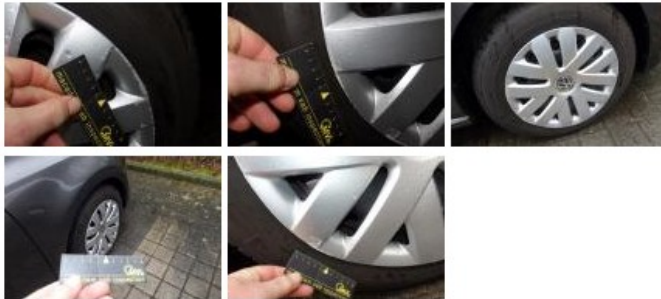
Bumper F R, Bump(s), It - Spot repair 115,56



Door R L, Scratch(es), Acceptable 0,00

*No pictures to display*

Wheel cover F R, Scratch(es), E - Replace 24,00



Door F L, Bump(s), Acceptable 0,00

*No pictures to display*

Bumper R, Scratch(es), It - Spot repair 115,56



Wing R R, Scratch(es), Acceptable 0,00

*No pictures to display*