


**AUDI A6 AVANT: 1KET269**

Vinnnumber:	<b>WAUZZZ4G3FN080220</b>	Versionname:	<b>2.0 TDI ULTRA 110KW S TRONIC</b>
First Registrationdate:	<b>16/04/2015</b>	Fiscalpower:	
Expertise Mileage:	<b>181494</b>	Power Kw:	<b>110</b>
Bodytype:	<b>Break</b>	Body color:	<b>Grey</b>
Gearbox:	<b>Automatic</b>	Paint type:	<b>Metalic</b>
Transmission:		Rims summer:	<b>Aluminium</b>
Fueltype:	<b>Diesel</b>	Oil level:	<b>OK</b>
Battery functioning:	<b>Yes</b>	Parking lot:	<b>1326</b>
Number of doors:	<b>5</b>		
Number of seats:	<b>5</b>		
Number head rests:	<b>5</b>		
Rims summer:	<b>Aluminium</b>		
Category:	<b>Passenger Car</b>		
Oil level:	<b>OK</b>		
Registration Certificate Car (BE):	<b>Yes</b>		

**Options**

Radio CD	Seats electric F L
Windows electric F	Seats electric F R
Windows electric R	Central consol F
Cruise Control	Luggage cover
Steering wheel multifunctional	Front parking sensors
Seats F heated	Rear parking sensors
Radio multimedia	
Type of headlighting:	<b>Headlighting Xenon</b>
Type of GPS:	<b>GPS big screen color</b>
Type of Lining:	<b>Lining leather</b>
Type of climate control:	<b>Autom climate control</b>

**Limited Technical Inspection**

Airco functioning	<b>OK</b>	Battery functioning	<b>Yes</b>
Tires wear profile	<b>OK</b>	Power steering	<b>Yes</b>
Idle position	<b>OK</b>	Sound engine	<b>OK</b>
Engine startingtime	<b>OK</b>	Clutch test	<b>OK</b>
Exhaust gass	<b>OK</b>	Wiper fluid level	<b>OK</b>
Handbrake	<b>OK</b>	Transmission	<b>OK</b>
		Lighting	<b>OK</b>
		Wiperblades	<b>OK</b>

**Degree of wear**

	<b>225/55/17/101 V LightMetal</b>			
Winter tyres:	Fr.L.	<b>Fulda: 8 mm</b>	Fr.R.	<b>Fulda: 8 mm</b>
	Re.L.	<b>Michelin: 5 mm</b>	Re.R.	<b>Michelin: 5 mm</b>

**Assistance equipment**

Repair kit	<b>Yes</b>	Compressor	<b>Yes</b>
------------	------------	------------	------------

Total cost ex VAT	258,16
-------------------	--------

Bumper R, Scratch(es), Acceptable	0,00
-----------------------------------	------

*No pictures to display*

Alloy rim F R, Scratch(es), LI - Repair and paint (complete)	95,00
--	-------

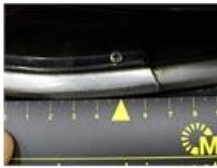




Alloy rim R L, Scratch(es), LI - Repair and paint (complete) 95,00



Bumper grille F R, Bad repair, E - Replace 34,08



Bumper grille F L, Bad repair, E - Replace 34,08

