


BMW 1: FG5154

Vinnumber:	WBA1C11080J833732	Versionname:	1 BER HATCH 118dA
First Registrationdate:	21/05/2014	Fiscalpower:	143PK Aut.
Expertise Mileage:	163041	Power Kw:	105
Bodytype:		Body color	Black
Gearbox:	Automatic	Paint type	Metalic
Transmission:		Rims summer	Aluminium
Fueltype:	Diesel	Oil level	OK
Battery functioning	Yes	Parking lot	3406
Number of doors	5		
Number of seats	5		
Number head rests	5		
Rims summer	Aluminium		
Category	Passenger Car		
Oil level	OK		

Options

Radio CD	Central consol F
Windows electric F	Luggage cover
Windows electric R	Front parking sensors
Cruise Control	Rear parking sensors
Steering wheel multifunction	
Seats F heated	
Radio multimedia	
Type of headlighting	Headlighting Xenon
Type of GPS	GPS big screen color
Type of Lining	Lining leather
Type of climate control	Autom climate control
Sport seats	

Limited Technical Inspection

Airco functioning	OK	Battery functioning	Yes
Tires wear profile	OK	Power steering	Yes
Idle position	OK	Sound engine	OK
Engine startingtime	OK	Clutch test	OK
Exhaust gass	OK	Wiper fluid level	OK
Handbrake	OK	Transmission	OK
		Lighting	OK
		Wiperblades	OK

Degree of wear

	205/5/16/91 H LightMetal			
Winter tyres:	Fr.L.	Michelin: 4 mm	Fr.R.	Michelin: 4 mm
	Re.L.	Michelin: 6 mm	Re.R.	Michelin: 6 mm

Assistance equipment

Repair kit	Yes	Compressor	Yes
------------	------------	------------	------------

Total cost ex VAT	879,55
-------------------	--------

Alloy rim R R, Scratch(es), LI - Repair and paint (complete)	95,00
--	-------



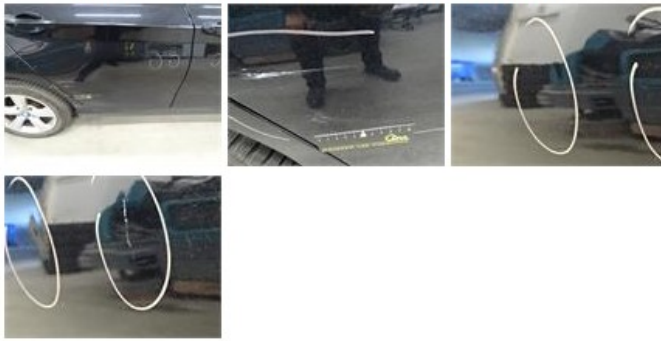
Door R L, Scratch(es), Acceptable	0,00
-----------------------------------	------

No pictures to display

Door F R, Bump(s), Acceptable	0,00
-------------------------------	------

No pictures to display

Door R R, Bump(s) and scratch(es), LI - Repair and paint (complete)	318,35
---	--------



Alloy rim F R, Scratch(es), LI - Repair and paint (complete) 95,00



Wing R R, Scratch(es), LI - Repair and paint (complete) 308,20



Roof, Bump(s), PDR - Knock out without painting 63,00

