



LEXUS CT 200h: 1FWP284

Vinnumber:	JTHKD5BH902157722	Versionname:	CT 200h BER Business Ed.E-CVT
First Registrationdate:	20/11/2013	Fiscalpower:	
Expertise Mileage:	25059	Power Kw:	73
Bodytype:		Body color:	Black
Gearbox:	Automatic	Paint type:	Metalic
Transmission:	Front	Rims summer:	Aluminium
Fueltype:	Hybrid Petrol	Oil level:	OK
Maintenance:	A 22606 KM		
Maintenance:	OK		
Battery functioning:	Yes		
Number of doors:	5		
Number of seats:	5		
Number head rests:	5		
Rims summer:	Aluminium		
Category:	Passenger Car		
Oil level:	OK		
Registration Certificate Car (BE):	Yes		

Options

Radio CD	Central consol F
GPS storage	Luggage cover
GPS storage	SD Front parking sensors
Windows electric F	Rear parking sensors
Windows electric R	
Cruise Control	
Steering wheel multifunctional	
Radio multimedia	
Type of headlighting:	Headlighting Halogen
Type of GPS:	GPS big screen color
Type of Lining:	Lining artificial leather
Type of climate control:	Autom climate control

Limited Technical Inspection

Airco functioning	OK	Battery functioning	Yes
Tires wear profile	OK	Power steering	Yes
Idle position	OK	Sound engine	OK
Engine startingtime	OK	Clutch test	OK
Exhaust gass	OK	Wiper fluid level	OK
Handbrake	OK	Transmission	OK
		Lighting	OK
		Wiperblades	OK

Degree of wear

	205/55/16/91 V LightMetal			
Summer tyres:	Fr.L.	Bridgestone: 5 mm	Fr.R.	Bridgestone: 5 mm
	Re.L.	Bridgestone: 6 mm	Re.R.	Bridgestone: 6 mm

Assistance equipment

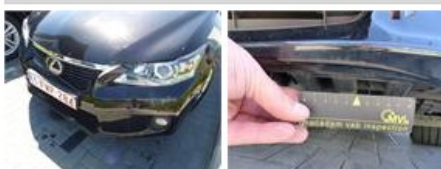
Repair kit	Yes	Compressor	Yes
		Jack	Yes

Total cost ex VAT	479,98
-------------------	--------

Bumper R, Scratch(es), Acceptable	0,00
-----------------------------------	------

No pictures to display

Front bumper, Scratch(es), LI - Repair and paint (complete)	211,80
---	--------



Wing R R, Scratch(es), Acceptable	0,00
-----------------------------------	------

No pictures to display

Wing F R, Bump(s) and scratch(es), LI - Repair and paint (complete)

268,18



Bonnet, Bump(s), Acceptable

0,00

No pictures to display