



**VOLKSWAGEN PASSAT VARIANT: 1JLB519**

Vinnnumber:	<b>WVWZZZ3CZEE096973</b>	Versionname:	<b>1.6 CR TDI 77KW BMT COMFORTLINE</b>
First Registrationdate:	<b>14/01/2015</b>	Fiscalpower:	
Expertise Mileage:	<b>171321</b>	Power Kw:	<b>77</b>
Bodytype:	<b>Break</b>	Body color:	<b>Dark Brown</b>
Gearbox:	<b>MAN 6 VIT</b>	Paint type:	<b>Metalic</b>
Transmission:		Rims summer:	<b>Aluminium</b>
Fueltype:	<b>Diesel</b>	Oil level:	<b>OK</b>
Battery functioning:	<b>Yes</b>	Parking lot:	<b>1506</b>
Number of doors:	<b>5</b>		
Number of seats:	<b>5</b>		
Number head rests:	<b>5</b>		
Rims summer:	<b>Aluminium</b>		
Category:	<b>Passenger Car</b>		
Oil level:	<b>OK</b>		
Registration Certificate Car (BE):	<b>Yes</b>		

**Options**

Radio CD	Sun Roof electric
Windows electric F	Panoramic roof
Windows electric R	Central consol F
Cruise Control	Luggage cover
Steering wheel multifunctional	Front parking sensors
Seats F heated	Rear parking sensors
Type of headlighting	<b>Headlighting Halogen</b>
Type of GPS	<b>GPS big screen color</b>
Type of Lining	<b>Lining leather</b>
Type of climate control	<b>Autom climate control</b>

**Limited Technical Inspection**

Airco functioning	<b>OK</b>	Battery functioning	<b>Yes</b>
Tires wear profile	<b>OK</b>	Power steering	<b>Yes</b>
Idle position	<b>OK</b>	Sound engine	<b>OK</b>
Engine startingtime	<b>OK</b>	Clutch test	<b>OK</b>
Exhaust gass	<b>OK</b>	Wiper fluid level	<b>OK</b>
Handbrake	<b>OK</b>	Transmission	<b>OK</b>
		Lighting	<b>OK</b>
		Wiperblades	<b>OK</b>

**Degree of wear**

	<b>215/55/16/97 W LightMetal</b>			
Summer tyres:	Fr.L.	<b>Firestone: 6 mm</b>	Fr.R.	<b>Firestone: 6 mm</b>
	Re.L.	<b>Firestone: 6 mm</b>	Re.R.	<b>Firestone: 6 mm</b>

**Assistance equipment**

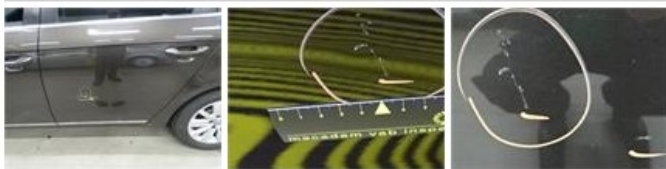
Repair kit	<b>Yes</b>	Compressor	<b>Yes</b>
------------	------------	------------	------------

Total cost ex VAT	738,53
-------------------	--------

Wing R R, Bump(s), Acceptable	0,00
-------------------------------	------

*No pictures to display*

Door R L, Bump(s) and scratch(es), LI - Repair and paint (complete)	318,35
---------------------------------------------------------------------	--------



Interior, Dirty, Cleaning	50,00
---------------------------	-------



Bonnet, Scratch(es), Acceptable	0,00
---------------------------------	------

*No pictures to display*

Certificate Of Conformity, Missing, E - Replace	150,00
-------------------------------------------------	--------

*No pictures to display*

Wing F L, Scratch(es), LI - Repair and paint (complete)	220,18
---------------------------------------------------------	--------



Bumper R, Scratch(es), Acceptable	0,00
-----------------------------------	------

*No pictures to display*

Wing F R, Scratch(es), Acceptable	0,00
-----------------------------------	------

*No pictures to display*

Door R R, Scratch(es), Acceptable	0,00
-----------------------------------	------

*No pictures to display*

Front bumper, Scratch(es), Acceptable	0,00
---------------------------------------	------

*No pictures to display*