



BMW 1: 1FAS515

Vinnnumber:	WBA1C91040J511264	Versionname:	1 HATCH 116d Eff.Dyn.Ed. 116PK
First Registrationdate:	8/05/2013	Fiscalpower:	
Expertise Mileage:	50692	Power Kw:	85
Bodytype:		Body color	Blue
Gearbox:	MAN 6 VIT	Paint type	Metalic
Transmission:		Rims summer	Aluminium
Fueltype:	Diesel	Oil level	OK
Battery functioning	Yes	Parking lot	1128
Number of doors	5		
Number of seats	5		
Number head rests	5		
Rims summer	Aluminium		
Category	Passenger Car		
Oil level	OK		

Options

Radio CD	Sun Roof electric
Windows electric F	Central consol F
Windows electric R	Luggage cover
Cruise Control	Rear parking sensors
Steering wheel multifunction	
Seats F heated	
Radio multimedia	
Type of headlighting	Headlighting Halogen
Type of GPS	GPS big screen color
Type of Lining	Lining leather
Type of climate control	Autom climate control

Limited Technical Inspection

Airco functioning	OK	Battery functioning	Yes
Tires wear profile	OK	Power steering	Yes
Idle position	OK	Sound engine	OK
Engine startingtime	OK	Clutch test	OK
Exhaust gass	OK	Wiper fluid level	OK
Handbrake	OK	Transmission	OK
		Lighting	OK
		Wiperblades	OK

Degree of wear

	205/55/16/91 W LightMetal			
Summer tyres:	Fr.L.	Michelin: 6 mm	Fr.R.	Michelin: 6 mm
	Re.L.	Michelin: 5 mm	Re.R.	Michelin: 5 mm

Assistance equipment

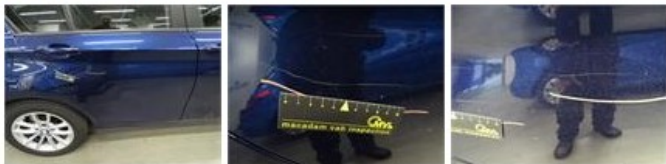
Repair kit	Yes	Compressor	Yes
------------	------------	------------	------------

Total cost ex VAT 1151,48

Door F R, Bump(s) and scratch(es), LI - Repair and paint (complete) 318,35



Door R R, Scratch(es), LI - Repair and paint (complete) 318,35



Wing F L, Scratch(es), LI - Repair and paint (complete) 220,18



Alloy rim R R, Scratch(es), Acceptable 0,00

No pictures to display

Alloy rim F R, Scratch(es), Acceptable 0,00

No pictures to display

Front bumper, Scratch(es), LI - Repair and paint (complete) 211,80



Bonnet, Bump(s), PDR - Knock out without painting 82,80



Bumper R, Scratch(es), Acceptable 0,00

No pictures to display

Wing R R, Scratch(es), Acceptable 0,00

No pictures to display