



## CITROEN Jumpy: VX5164

Vinnnumber:	<b>VF7XUAHZ8DZ004972</b>	Versionname:	<b>JUMPY B/F MWB L2H1 Fresh 1200kg 128PK</b>
First Registrationdate:	<b>1/03/2016</b>	Fiscalpower:	
Expertise Mileage:	<b>99017</b>	Power Kw:	<b>94</b>
Bodytype:		Body color:	<b>White</b>
Gearbox:	<b>MAN 6 VIT</b>	Paint type:	<b>Opaque</b>
Transmission:	<b>Front</b>	Rims summer:	<b>Steel</b>
Fueltype:	<b>Diesel</b>	Oil level:	<b>OK</b>
Maintenance:	<b>-5300KM</b>	Parking lot:	<b>2423</b>
Maintenance:	<b>NOT OK</b>		
Battery functioning:	<b>Yes</b>		
Number of doors:	<b>5</b>		
Number of seats:	<b>3</b>		
Number head rests:	<b>3</b>		
Rims summer:	<b>Steel</b>		
Category:	<b>Passenger Car</b>		
Oil level:	<b>OK</b>		

## Options

Radio CD	
Windows electric F	
Type of headlighting	<b>Headlighting Halogen</b>
Type of Lining	<b>Lining artificial leather</b>
Type of climate control	<b>Manual climate control</b>

## Limited Technical Inspection

Airco functioning	<b>OK</b>	Battery functioning	<b>Yes</b>
Tires wear profile	<b>OK</b>	Power steering	<b>Yes</b>
Idle position	<b>OK</b>	Sound engine	<b>OK</b>
Engine startingtime	<b>OK</b>	Clutch test	<b>OK</b>
Exhaust gass	<b>OK</b>	Wiper fluid level	<b>OK</b>
Handbrake	<b>OK</b>	Transmission	<b>OK</b>
		Lighting	<b>OK</b>
		Wiperblades	<b>OK</b>

## Degree of wear

	<b>215/60/16/103 T Steel</b>			
Winter tyres:	Fr.L.	<b>Bridgestone: 6 mm</b>	Fr.R.	<b>Bridgestone: 6 mm</b>
	Re.L.	<b>Bridgestone: 8 mm</b>	Re.R.	<b>Bridgestone: 8 mm</b>

## Assistance equipment

Spare wheel	<b>Yes</b>	Jack	<b>Yes</b>
-------------	------------	------	------------

Total cost ex VAT	1759,15
-------------------	---------

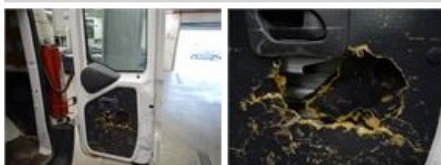
Door F L, Scratch(es), Acceptable	0,00
-----------------------------------	------

*No pictures to display*

Rearview mirror housing L, Scratch(es), Acceptable	0,00
--	------

*No pictures to display*

Trunk door panel R, Hole, E - Replace	70,00
---------------------------------------	-------



Wing F R, Scratch(es), LI - Repair and paint (complete)	165,13
---	--------



Wing R L, Bump(s) and scratch(es), LI - Repair and paint (complete) 231,15



Engine protective plate, Hole, E - Replace 35,00



Dashboard, Not functioning (well), P - Check 0,00



Sidewall mid L (LCV) , Bump(s), PDR - Knock out without painting 163,00



Steering wheel, Worn, Acceptable 0,00



Interior, Dirty, Acceptable 0,00



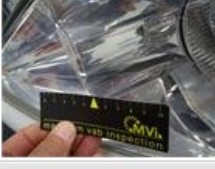
Trunk door R R, Bump(s) and scratch(es), LI - Repair and paint (complete) 115,00



Dashboard, Strained , Repair/replace (lump sum) 0,00



Headlight L, Scratch(es), 67 - Polish 55,19





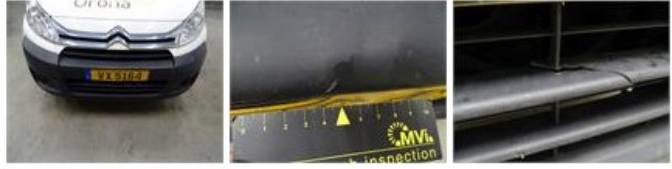



Door F R, Scratch(es), Acceptable 0,00

No pictures to display

Maintenance, Maintenance, Execute 0,00

No pictures to display

No pictures to display	
Rearlight L, Crack, E - Replace	120,00
	
Trunk door panel L, Hole, E - Replace	70,00
	
Bumper corner R R, Scratch(es), Smart repair	110,64
	
Interior, Stain, Cleaning	25,00
	
Bodywork, Not original part, Acceptable	0,00
<i>No pictures to display</i>	
Bonnet, Scratch(es), Acceptable	0,00
<i>No pictures to display</i>	
Front bumper, Broken, E - Replace	398,40
	
Sliding door panel R, Hole, E - Replace	90,00
	
Rearview mirror housing R, Scratch(es), Smart repair	110,64
