



CITROEN JUMPY: 1BWA075

Vinnumber:	VF7XS9HM0EZ041735	Versionname:	
First Registrationdate:	18/11/2014	Fiscalpower:	
Expertise Mileage:	156590	Power Kw:	66
Bodytype:	Transporter	Body color:	Light Grey
Gearbox:	MAN 5 VIT	Paint type:	Metalic
Transmission:		Rims summer:	Steel
Fueltype:	Diesel	Oil level:	OK
Battery functioning:	Yes	Parking lot:	2721
Number of doors:	5		
Number of seats:	3		
Number head rests:	3		
Rims summer:	Steel		
Category:	Light Commercial Vehicle		
Oil level:	OK		
Registration Certificate Car (BE):	Yes		

Options

Radio CD		Rear parking sensors	
Windows electric F		Type of Tow bar	Tow bar fixed
Type of headlighting	Headlighting Halogen		
Type of GPS	GPS big screen color		
Type of Lining	Lining fabrics		
Type of climate control	Manual climate control		

Limited Technical Inspection

Airco functioning	OK	Battery functioning	Yes
Tires wear profile	NOT OK	Power steering	Yes
Idle position	OK	Sound engine	OK
Engine startingtime	OK	Clutch test	OK
Exhaust gass	OK	Wiper fluid level	OK
Handbrake	OK	Transmission	OK
		Lighting	NOT OK
		Wiperblades	OK

Degree of wear

	215/60/16/106 T Steel			
Summer tyres:	Fr.L.	Michelin: 0 mm	Fr.R.	Michelin: 0 mm
	Re.L.	Michelin: 2 mm	Re.R.	Michelin: 2 mm

Assistance equipment

Spare wheel **No**

Total cost ex VAT **3288,80**

Spare Tyre, Missing, E - Replace **105,00**

No pictures to display

Interior, Dirty, Cleaning **50,00**



Bumper R, Scratch(es), Smart repair **110,64**



Trunk door R L, Bump(s), PDR - Knock out without painting 82,80



Internal Boot Lining R, Damaged, Smart repair 110,64



Wing R R, Bump(s) and scratch(es), LI - Repair and paint (complete) 231,15



Door R R, Bump(s), Acceptable 0,00

No pictures to display

Wing R L, Bump(s) and scratch(es), LI - Repair and paint (complete) 231,15



Seat cover F L, Damaged, E - Replace 300,00



Door R L, Bump(s) and scratch(es), LI - Repair and paint (complete) 238,76





Wing F R, Scratch(es), Acceptable 0,00

No pictures to display

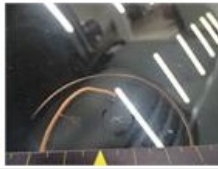
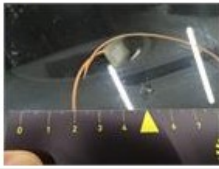
Floor covering F L, Damaged, E - Replace 237,00



Sill outer L, Bump(s) and scratch(es), LI - Repair and paint (complete) 232,88



Windscreen, Damaged, E - Replace 395,40



Door F L, Bump(s) and scratch(es), Le - Replace and paint 847,88



Trunk door R R, Bump(s), Acceptable 0,00

No pictures to display

Foglight R, Damaged, E - Replace 115,50

