



**BMW 5: 1GQF898**

Vinnumber:	<b>WBA5C31070D767735</b>	Versionname:	<b>5 BER 520dA 163PK Aut.</b>
First Registrationdate:	<b>1/04/2014</b>	Fiscalpower:	
Expertise Mileage:	<b>165318</b>	Power Kw:	<b>120</b>
Bodytype:		Body color:	<b>Dark Blue</b>
Gearbox:	<b>Automatic</b>	Paint type:	<b>Metalic</b>
Transmission:	<b>Back</b>	Rims summer:	<b>Aluminium</b>
Fueltype:	<b>Diesel</b>	Oil level:	<b>OK</b>
Maintenance:	<b>OVER 21000KM</b>	Parking lot:	<b>3528</b>
Maintenance:	<b>OK</b>		
Battery functioning:	<b>Yes</b>		
Number of doors:	<b>4</b>		
Number of seats:	<b>5</b>		
Number head rests:	<b>5</b>		
Rims summer:	<b>Aluminium</b>		
Category:	<b>Passenger Car</b>		
Oil level:	<b>OK</b>		
Registration Certificate Car (BE):	<b>Yes</b>		

**Options**

Radio CD		Sun Roof electric	
GPS storage	<b>HD</b>	Central consol F	
GPS storage		Luggage cover	
Windows electric F		Front parking sensors	
Windows electric R		Rear parking sensors	
Cruise Control			
Steering wheel multifunctional			
Seats F heated			
Type of headlighting	<b>Headlighting Xenon</b>		
Type of GPS	<b>GPS big screen color</b>		
Type of Lining	<b>Lining leather</b>		
Type of climate control	<b>Autom climate control</b>		

**Limited Technical Inspection**

Airco functioning	<b>OK</b>	Battery functioning	<b>Yes</b>
Tires wear profile	<b>OK</b>	Power steering	<b>Yes</b>
Idle position	<b>OK</b>	Sound engine	<b>OK</b>
Engine startingtime	<b>OK</b>	Clutch test	<b>OK</b>
Exhaust gass	<b>OK</b>	Wiper fluid level	<b>OK</b>
Handbrake	<b>OK</b>	Transmission	<b>OK</b>
		Lighting	<b>OK</b>
		Wiperblades	<b>OK</b>

**Degree of wear**

	<b>225/55/17/97 H LightMetal</b>			
Winter tyres:	Fr.L.	<b>Goodyear: 6 mm</b>	Fr.R.	<b>Goodyear: 6 mm</b>
	Re.L.	<b>Goodyear: 6 mm</b>	Re.R.	<b>Goodyear: 6 mm</b>

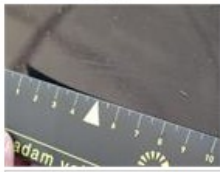
**Assistance equipment**

Repair kit	<b>Yes</b>	Compressor	<b>Yes</b>
------------	------------	------------	------------

Total cost ex VAT	<b>289,16</b>
-------------------	---------------

Front bumper, Bump(s) and scratch(es), LI - Repair and paint (complete)	<b>254,16</b>
---	---------------





Engine protective plate, Hole, E - Replace 35,00

