



BMW 3: 1EYL182

Vinnumber:	WBA3K910X0F930203	Versionname:	3 TOURING 316d 116PK
First Registrationdate:	22/04/2013	Fiscalpower:	
Expertise Mileage:	123599	Power Kw:	85
Bodytype:	Break	Body color:	Brown
Gearbox:	MAN 6 VIT	Paint type:	Metalic
Transmission:		Rims summer:	Aluminium
Fueltype:	Diesel	Oil level:	OK
Battery functioning:	Yes	Parking lot:	2226
Number of doors:	5		
Number of seats:	5		
Number head rests:	5		
Rims summer:	Aluminium		
Category:	Passenger Car		
Oil level:	OK		

Options

Radio CD	Central consol F
Windows electric F	Luggage cover
Windows electric R	Rear parking sensors
Cruise Control	
Steering wheel multifunctional	
Radio multimedia	
Type of headlighting	Headlighting Halogen
Type of GPS	GPS big screen color
Type of Lining	Lining fabrics
Type of climate control	Autom climate control

Limited Technical Inspection

Airco functioning	OK	Battery functioning	Yes
Tires wear profile	OK	Power steering	Yes
Idle position	OK	Sound engine	OK
Engine startingtime	OK	Clutch test	OK
Exhaust gass	OK	Wiper fluid level	OK
Handbrake	OK	Transmission	OK
		Lighting	OK
		Wiperblades	OK

Degree of wear

	205/60/16/92 W LightMetal			
Summer tyres:	Fr.L.	Goodyear: 4 mm	Fr.R.	Goodyear: 4 mm
	Re.L.	Goodyear: 4 mm	Re.R.	Goodyear: 4 mm

Assistance equipment

Repair kit	Yes	Compressor	Yes
------------	------------	------------	------------

Total cost ex VAT	189,56
-------------------	---------------

Rearview mirror housing R, Scratch(es), LI - Repair and paint (complete)	115,56
--	---------------



Door R L, Scratch(es), Acceptable	0,00
-----------------------------------	-------------

No pictures to display

Protection plate M, Tear, E - Replace	74,00
---------------------------------------	--------------



Alloy rim F R, Scratch(es), Acceptable 0,00

No pictures to display

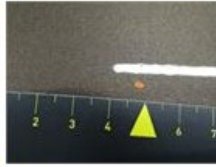
Door R R, Bump(s), Acceptable 0,00

No pictures to display

Bumper R, Scratch(es), Acceptable 0,00

No pictures to display

Wing R R, Repaired, Acceptable 0,00



Door F L, Scratch(es), Acceptable 0,00

No pictures to display