



OPEL Insignia: 1HSC101			
Vinnumber:	<b>WOLGT8ES7E1150282</b>	Versionname:	<b>INSIGNIA BRE ecoFLEX Cosmo 140PK</b>
First Registrationdate:	<b>18/09/2014</b>	Fiscalpower:	
Expertise Mileage:	<b>161679</b>	Power Kw:	<b>103</b>
Bodytype:	<b>Break</b>	Body color:	<b>Green</b>
Gearbox:	<b>MAN 6 VIT</b>	Paint type:	<b>Metalic</b>
Transmission:		Rims summer:	<b>Aluminium</b>
Fueltype:	<b>Diesel</b>	Oil level:	<b>OK</b>
Battery functioning:	<b>Yes</b>	Parking lot:	<b>1126</b>
Number of doors:	<b>5</b>		
Number of seats:	<b>5</b>		
Number head rests:	<b>5</b>		
Rims summer:	<b>Aluminium</b>		
Category:	<b>Passenger Car</b>		
Oil level:	<b>OK</b>		
Registration Certificate Car (BE):	<b>Yes</b>		

Options	
Windows electric F	Central consol F
Windows electric R	Luggage cover
Cruise Control	Front parking sensors
Steering wheel multifunction	Rear parking sensors
Seats F heated	
Radio multimedia	
Type of headlighting	<b>Headlighting Halogen</b>
Type of GPS	<b>GPS big screen color</b>
Type of Lining	<b>Lining leather</b>
Type of climate control	<b>Autom climate control</b>

Limited Technical Inspection			
Airco functioning	<b>OK</b>	Battery functioning	<b>Yes</b>
Tires wear profile	<b>OK</b>	Power steering	<b>Yes</b>
Idle position	<b>OK</b>	Sound engine	<b>OK</b>
Engine startingtime	<b>OK</b>	Clutch test	<b>OK</b>
Exhaust gass	<b>OK</b>	Wiper fluid level	<b>NOT OK</b>
Handbrake	<b>OK</b>	Transmission	<b>OK</b>
		Lighting	<b>OK</b>
		Wiperblades	<b>OK</b>

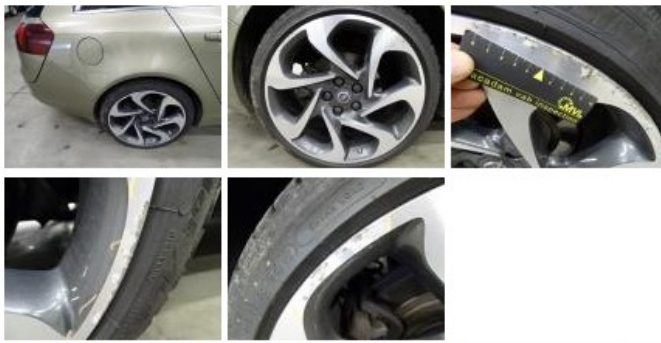
Degree of wear				
	<b>245/35/20/95 W LightMetal</b>			
Summer tyres:	Fr.L.	<b>Michelin: 7 mm</b>	Fr.R.	<b>Michelin: 7 mm</b>
	Re.L.	<b>Michelin: 7 mm</b>	Re.R.	<b>Michelin: 7 mm</b>

Assistance equipment			
Emergency spare wheel	<b>Yes</b>	Jack	<b>Yes</b>

Total cost ex VAT	1427,33
Sill outer R, Bump(s) and scratch(es), LI - Repair and paint (complete)	310,50



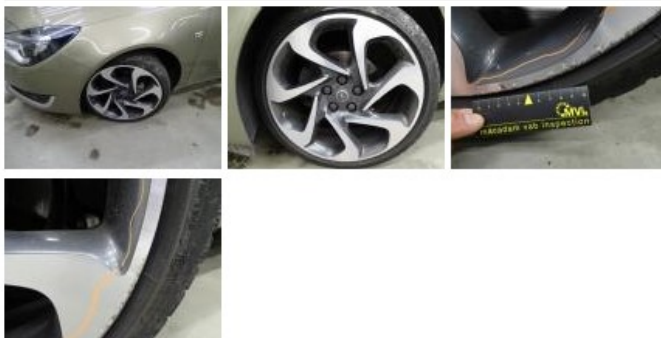
Alloy rim R L polished, Scratch(es), Acceptable	0,00
<i>No pictures to display</i>	
Alloy rim R R polished, Scratch(es), LI - Repair and paint (complete)	95,00



Door F L, Scratch(es), LI - Repair and paint (complete) 318,35



Alloy rim F L polished, Scratch(es), LI - Repair and paint (complete) 95,00



Bumper R, Scratch(es), LI - Repair and paint (complete) 211,80



Alloy rim F R polished, Scratch(es), LI - Repair and paint (complete) 95,00



Tailgate, Scratch(es), LI - Repair and paint (complete) 301,68



Bonnet, Stone chip(s), Acceptable 0,00

No pictures to display