



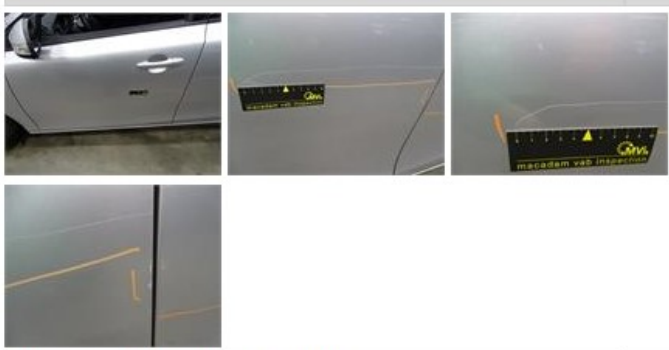
VOLVO V40: 1GQF145			
Vinnnumber:	<b>YV1MV8481E2137660</b>	Versionname:	<b>V40 D2 Base 115PK</b>
First Registrationdate:	<b>1/04/2014</b>	Fiscalpower:	
Expertise Mileage:	<b>59800</b>	Power Kw:	<b>84</b>
Bodytype:		Body color:	<b>Light Grey</b>
Gearbox:	<b>MAN 6 VIT</b>	Paint type:	<b>Metalic</b>
Transmission:		Rims summer:	<b>Steel</b>
Fueltype:	<b>Diesel</b>	Oil level:	<b>OK</b>
Battery functioning:	<b>Yes</b>	Parking lot:	<b>2804</b>
Number of doors:	<b>5</b>		
Number of seats:	<b>5</b>		
Number head rests:	<b>5</b>		
Rims summer:	<b>Steel</b>		
Category:	<b>Passenger Car</b>		
Oil level:	<b>OK</b>		
Registration Certificate Car (BE):	<b>Yes</b>		

Options	
Radio CD	Central consol F
Windows electric F	Luggage cover
Windows electric R	Rear parking sensors
Cruise Control	
Steering wheel multifunctional	
Radio multimedia	
Type of headlighting	<b>Headlighting Halogen</b>
Type of GPS	<b>GPS big screen color</b>
Type of Lining	<b>Lining fabrics</b>
Type of climate control	<b>Manual climate control</b>

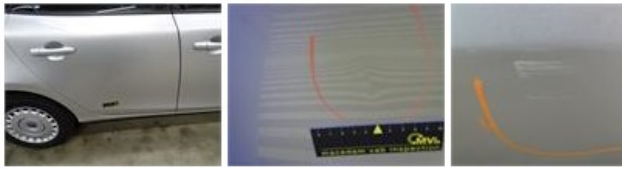

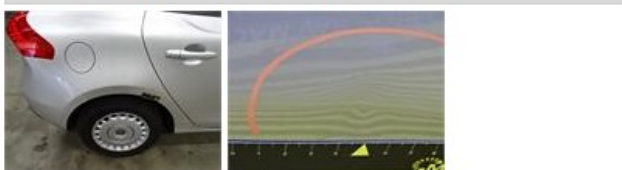
Limited Technical Inspection			
Airco functioning	<b>OK</b>	Battery functioning	<b>Yes</b>
Tires wear profile	<b>OK</b>	Power steering	<b>Yes</b>
Idle position	<b>OK</b>	Sound engine	<b>OK</b>
Engine startingtime	<b>OK</b>	Clutch test	<b>OK</b>
Exhaust gass	<b>OK</b>	Wiper fluid level	<b>OK</b>
Handbrake	<b>OK</b>	Transmission	<b>OK</b>
		Lighting	<b>OK</b>
		Wiperblades	<b>OK</b>

Degree of wear				
	<b>195/65/15/91 H Steel</b>			
Summer tyres:	Fr.L.	<b>Hankook: 7 mm</b>	Fr.R.	<b>Hankook: 7 mm</b>
	Re.L.	<b>Hankook: 8 mm</b>	Re.R.	<b>Hankook: 8 mm</b>

Assistance equipment	
Repair kit	<b>Yes</b>
Compressor	<b>Yes</b>
Total cost ex VAT	2723,56
Door F L, Scratch(es), LI - Repair and paint (complete)	318,35



Wheel cover R R, Scratch(es), Acceptable	0,00
--	------

Door R R, Bump(s) and scratch(es), LI - Repair and paint (complete)	318,35
	
Front bumper, Damaged, Le - Replace and paint	735,00
	
Door F R, Scratch(es), LI - Repair and paint (complete)	318,35
	
Door R L, Scratch(es), LI - Repair and paint (complete)	318,35
	
Wing F R, Scratch(es), LI - Repair and paint (complete)	220,18
	
Wing R R, Bump(s), PDR - Knock out without painting	63,00
	
Rearview mirror housing R, Scratch(es), Acceptable	0,00
<i>No pictures to display</i>	
Wing F L, Bump(s) and scratch(es), LI - Repair and paint (complete)	220,18
	
Bumper R, Bump(s) and scratch(es), LI - Repair and paint (complete)	211,80

