



VOLVO V40: 1GSI129

Vinnnumber:	YV1MV8481E2149730	Versionname:	V40 D2 Base 115PK
First Registrationdate:	15/04/2014	Fiscalpower:	
Expertise Mileage:	53798	Power Kw:	84
Bodytype:	Break	Body color:	Dark Grey
Gearbox:	MAN 6 VIT	Paint type:	Metalic
Transmission:	Front	Rims summer:	Aluminium
Fueltype:	Diesel	Oil level:	OK
Battery functioning:	Yes	Parking lot:	2609
Number of doors:	5		
Number of seats:	5		
Number head rests:	5		
Rims summer:	Aluminium		
Category:	Passenger Car		
Oil level:	OK		
Registration Certificate Car (BE):	Yes		

Options

Radio CD		Central consol F	
Windows electric F		Luggage cover	
Windows electric R		Rear parking sensors	
Cruise Control		Type of Tow bar	Tow bar fixed
Steering wheel multifunctional			
Radio multimedia			
Type of headlighting	Headlighting Halogen		
Type of GPS	GPS big screen color		
Type of Lining	Lining leather		
Type of climate control	Manual climate control		

Limited Technical Inspection

Airco functioning	OK	Battery functioning	Yes
Tires wear profile	OK	Power steering	Yes
Idle position	OK	Sound engine	OK
Engine startingtime	OK	Clutch test	OK
Exhaust gass	OK	Wiper fluid level	OK
Handbrake	OK	Transmission	OK
		Lighting	OK
		Wiperblades	OK

Degree of wear

	205/55/16/91 V LightMetal			
Summer tyres:	Fr.L.	Michelin: 3 mm	Fr.R.	Michelin: 3 mm
	Re.L.	Michelin: 4 mm	Re.R.	Michelin: 4 mm

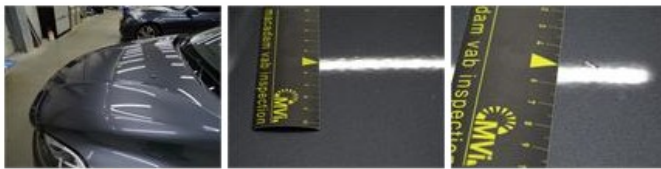
Assistance equipment

Repair kit	Yes	Compressor	Yes
------------	------------	------------	------------

Total cost ex VAT	926,64
Bumper R, Difference in color, Acceptable	0,00



Alloy rim R L, Scratch(es), Acceptable	0,00
<i>No pictures to display</i>	
Bonnet, Bad repair, Acceptable	0,00



Foglight R, Damaged, E - Replace 138,00



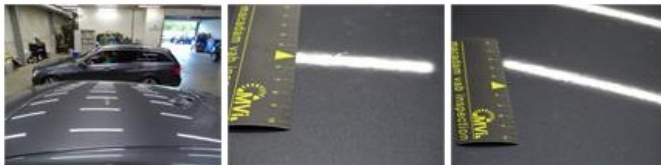
Alloy rim R R, Scratch(es), LI - Repair and paint (complete) 95,00



Rearview mirror housing L, Scratch(es), Smart repair 110,64



Roof, Bad repair, Acceptable 0,00



Alloy rim F L, Scratch(es), Acceptable 0,00

No pictures to display

Front bumper, Scratch(es), LI - Repair and paint (complete) 211,80



Wing R R, Bump(s) and scratch(es), LI - Repair and paint (complete) 308,20



Door R R, Scratch(es), Acceptable 0,00

No pictures to display

Wing R L, Bump(s), PDR - Knock out without painting 63,00

