



BMW 1: 1GUL229			
Vinnumber:	WBA1C71020J048206	Versionname:	1 BER HATCH 116dA 116PK Aut.
First Registrationdate:	5/05/2014	Fiscalpower:	
Expertise Mileage:	162356	Power Kw:	85
Bodytype:		Body color:	Grey
Gearbox:	Automatic	Paint type:	Metalic
Transmission:		Rims summer:	Aluminium
Fueltype:	Diesel	Oil level:	OK
Battery functioning:	Yes	Parking lot:	3105
Number of doors:	5		
Number of seats:	5		
Number head rests:	6		
Rims summer:	Aluminium		
Category:	Passenger Car		
Oil level:	OK		
Registration Certificate Car (BE):	Yes		

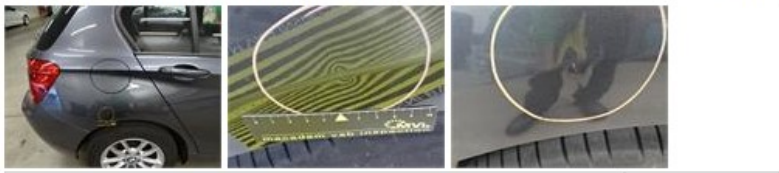
Options	
Radio CD	Central consol F
Windows electric F	Luggage cover
Windows electric R	Rear parking sensors
Cruise Control	
Steering wheel multifunctional	
Radio multimedia	
Type of headlighting	Headlighting Halogen
Type of Lining	Lining leather
Type of climate control	Manual climate control

Limited Technical Inspection			
Airco functioning	OK	Battery functioning	Yes
Tires wear profile	OK	Power steering	Yes
Idle position	OK	Sound engine	OK
Engine startingtime	OK	Clutch test	OK
Exhaust gass	OK	Wiper fluid level	NOT OK
Handbrake	OK	Transmission	OK
		Lighting	OK
		Wiperblades	OK

Degree of wear				
	205/55/16/91 W LightMetal			
Summer tyres:	Fr.L.	Bridgestone: 4 mm	Fr.R.	Bridgestone: 4 mm
	Re.L.	Michelin: 5 mm	Re.R.	Michelin: 5 mm

Assistance equipment			
Repair kit	Yes	Compressor	Yes

Total cost ex VAT	371,20
Bonnet, Chemical polution, Acceptable	0,00
<i>No pictures to display</i>	
Wing R R, Bump(s) and scratch(es), LI - Repair and paint (complete)	308,20



Door F R, Bump(s) and scratch(es), Acceptable	0,00
<i>No pictures to display</i>	
Door F L, Bump(s), PDR - Knock out without painting	63,00



Door R L, Bump(s), Acceptable	0,00
<i>No pictures to display</i>	
Door R R, Bump(s), Acceptable	0,00
<i>No pictures to display</i>	
Windscreen, Stone chip(s), Acceptable	0,00
<i>No pictures to display</i>	