


**OPEL Vivaro 2900: 1FXW372**

Vinnnumber:	<b>WOLF7B1A1EV608668</b>	Versionname:	<b>VIVARO 2900 B/F L1H1 DPF (EUR5) 115PK</b>
First Registrationdate:	<b>2/12/2013</b>	Fiscalpower:	
Expertise Mileage:	<b>143570</b>	Power Kw:	<b>84</b>
Bodytype:	<b>Transporter</b>	Body color:	<b>White</b>
Gearbox:	<b>MAN 6 VIT</b>	Paint type:	<b>Metalic</b>
Transmission:		Rims summer:	<b>Steel</b>
Fueltype:	<b>Diesel</b>	Oil level:	<b>OK</b>
Battery functioning:	<b>Yes</b>	Parking lot:	<b>1719</b>
Number of doors:	<b>5</b>		
Number of seats:	<b>3</b>		
Number head rests:	<b>3</b>		
Rims summer:	<b>Steel</b>		
Category:	<b>Light Commercial Vehicle</b>		
Oil level:	<b>OK</b>		
Registration Certificate Car (BE):	<b>Yes</b>		

**Options**

Radio CD		Central consol F	
Windows electric F		Rear parking sensors	
Cruise Control		Type of Tow bar	<b>Tow bar fixed</b>
Steering wheel multifunctional			
Type of headlighting	<b>Headlighting Halogen</b>		
Type of GPS	<b>GPS big screen color</b>		
Type of Lining	<b>Lining fabrics</b>		
Type of climate control	<b>Manual climate control</b>		

**Limited Technical Inspection**

Airco functioning	<b>OK</b>	Battery functioning	<b>Yes</b>
Tires wear profile	<b>OK</b>	Power steering	<b>Yes</b>
Idle position	<b>OK</b>	Sound engine	<b>OK</b>
Engine startingtime	<b>OK</b>	Clutch test	<b>OK</b>
Exhaust gass	<b>OK</b>	Wiper fluid level	<b>OK</b>
Handbrake	<b>OK</b>	Transmission	<b>OK</b>
		Lighting	<b>OK</b>
		Wiperblades	<b>OK</b>

**Degree of wear**

	<b>205/65/16/107 T Steel</b>			
Winter tyres:	Fr.L.	<b>Dunlop: 5 mm</b>	Fr.R.	<b>Dunlop: 5 mm</b>
	Re.L.	<b>Uniroyal: 9 mm</b>	Re.R.	<b>Uniroyal: 9 mm</b>

**Assistance equipment**

Total cost ex VAT	1220,04
Interior, Dirty, Cleaning	0,00



Bodywork, Not original part, Acceptable	0,00
-----------------------------------------	------

*No pictures to display*

Trunk door R R, Bump(s), It - Spot repair	115,56
-------------------------------------------	--------



Front bumper, Scratch(es), LI - Repair and paint (complete)	0,00
-------------------------------------------------------------	------



Door moulding Lower R L, Damaged, E - Replace 91,50



Front bumper, Scratch(es), E - Replace 0,00



Trunk door R L, Bump(s), It - Spot repair 115,56



Trunk door R L, Bump(s), It - Spot repair 115,56



Door R L, Bump(s) and scratch(es), LI - Repair and paint (complete) 238,76



Bumper corner R R, Scratch(es), Smart repair 0,00



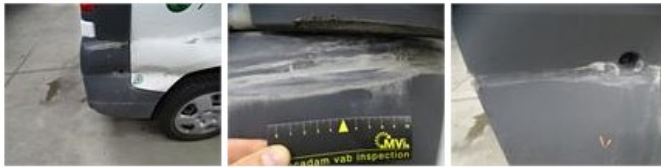
Bumper corner R R, Scratch(es), Smart repair 0,00



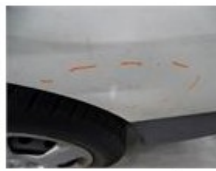
Wing F R, Bump(s) and scratch(es), Le - Replace and paint 427,51



Bumper corner R R, Scratch(es), E - Replace 0,00



Wing R L, Bump(s) and scratch(es), LI - Repair and paint (complete) 231,15



Wing R R, Bump(s) and scratch(es), Le - Replace and paint 0,00

