


**PEUGEOT Partner: 1DLE113**

Vinnumber:	<b>VF37A9HN0CN511017</b>	Versionname:	<b>PARTNER B/F L1H1 Conf.120 FAP(EU5)75PK</b>
First Registrationdate:	<b>14/06/2012</b>	Fiscalpower:	
Expertise Mileage:	<b>130096</b>	Power Kw:	<b>55</b>
Bodytype:	<b>Transporter</b>	Body color:	<b>White</b>
Gearbox:	<b>MAN 5 VIT</b>	Paint type:	<b>Opaque</b>
Transmission:	<b>Front</b>	Rims summer:	<b>Steel</b>
Fueltype:	<b>Diesel</b>	Oil level:	<b>OK</b>
Battery functioning:	<b>Yes</b>	Parking lot:	<b>3102</b>
Number of doors:	<b>5</b>		
Number of seats:	<b>2</b>		
Number head rests:	<b>2</b>		
Rims summer:	<b>Steel</b>		
Category:	<b>Light Commercial Vehicle</b>		
Oil level:	<b>OK</b>		

**Options**

Radio CD	Type of Tow bar	<b>Tow bar fixed</b>
Windows electric F		
Radio multimedia		
Type of headlighting	<b>Headlighting Halogen</b>	
Type of Lining	<b>Lining fabrics</b>	
Type of climate control	<b>Manual climate control</b>	

**Limited Technical Inspection**

Airco functioning	<b>OK</b>	Battery functioning	<b>Yes</b>
Tires wear profile	<b>OK</b>	Power steering	<b>Yes</b>
Idle position	<b>OK</b>	Sound engine	<b>OK</b>
Engine startingtime	<b>OK</b>	Clutch test	<b>OK</b>
Exhaust gass	<b>OK</b>	Wiper fluid level	<b>OK</b>
Handbrake	<b>OK</b>	Transmission	<b>OK</b>
		Lighting	<b>OK</b>
		Wiperblades	<b>OK</b>

**Degree of wear**

	<b>195/65/15/91 T Steel</b>			
Summer tyres:	Fr.L.	<b>Michelin: 4 mm</b>	Fr.R.	<b>Michelin: 4 mm</b>
	Re.L.	<b>Michelin: 5 mm</b>	Re.R.	<b>Michelin: 5 mm</b>

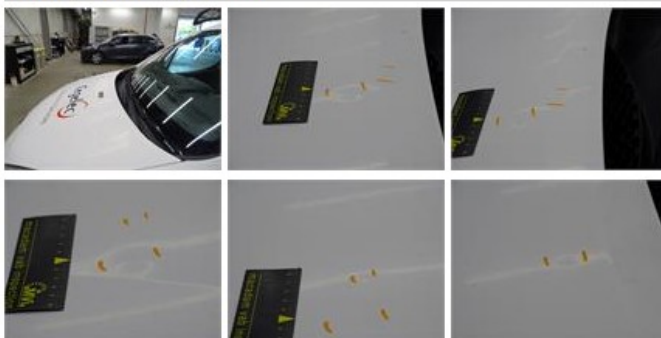
**Assistance equipment**

Spare wheel	<b>Yes</b>	Jack	<b>Yes</b>
-------------	------------	------	------------

**Total cost ex VAT** 381,15

**Wing F R, Scratch(es), Acceptable** 0,00

*No pictures to display*
**Bumper R, Scratch(es), Acceptable** 0,00

*No pictures to display*
**Bonnet, Hail damage, PDR - Hail** 150,00




Roof, Bump(s), Acceptable	0,00
<i>No pictures to display</i>	
Sliding door R, Scratch(es), Acceptable	0,00
<i>No pictures to display</i>	
Bodywork, Not original part, Acceptable	0,00
<i>No pictures to display</i>	
Wing R R, Bump(s) and scratch(es), LI - Repair and paint (complete)	231,15

